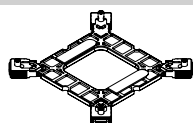
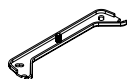




## Parts List



**A** x 1



**B** x 2



Intel  
**C** x 4



Blue  
**D** x 4



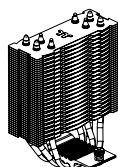
Black  
**E** x 4



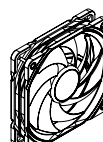
AMD  
**F** x 4



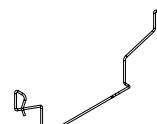
**G** x 1



**H** x 1

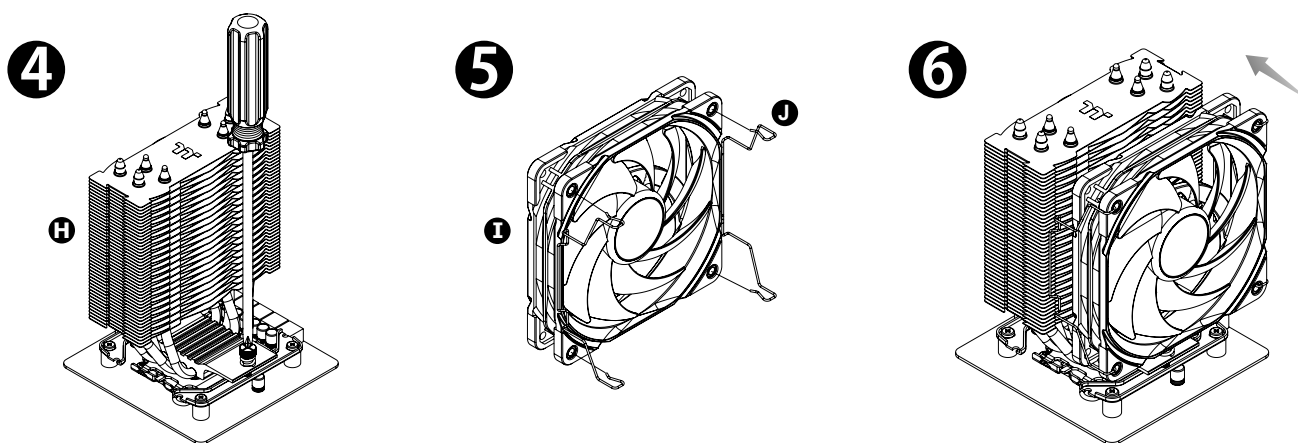
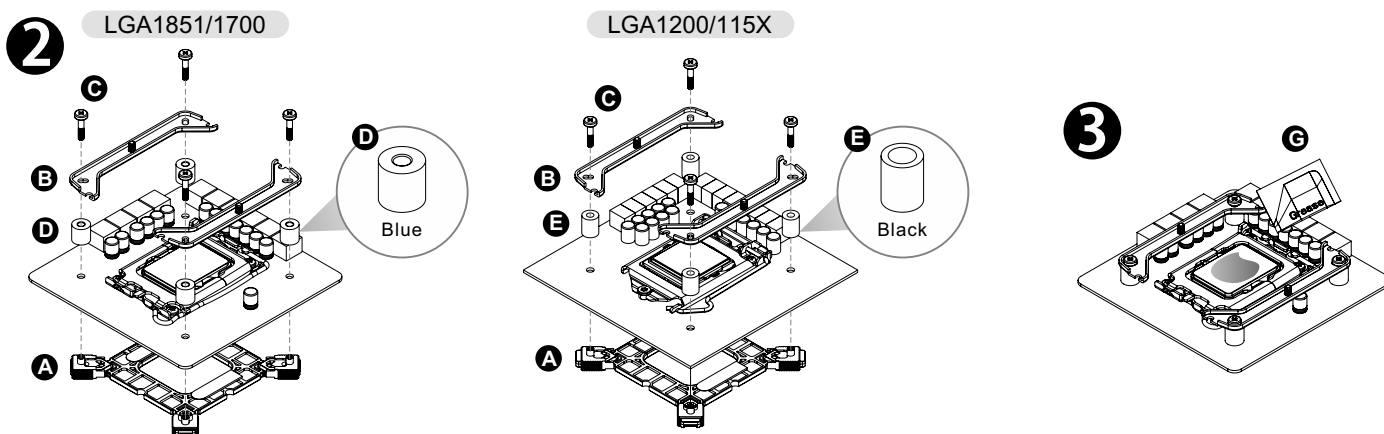
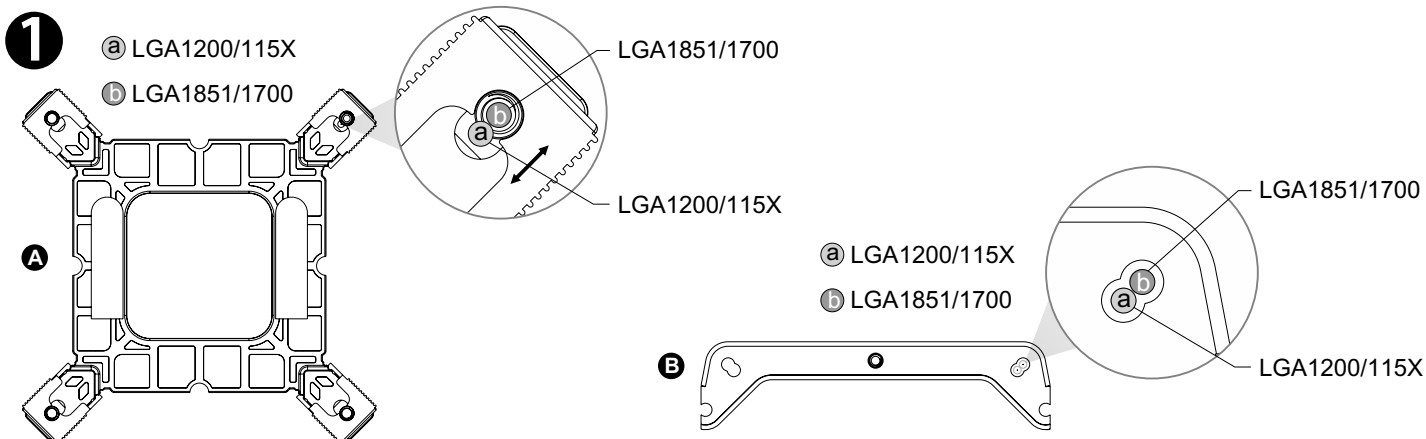


**I** x 1

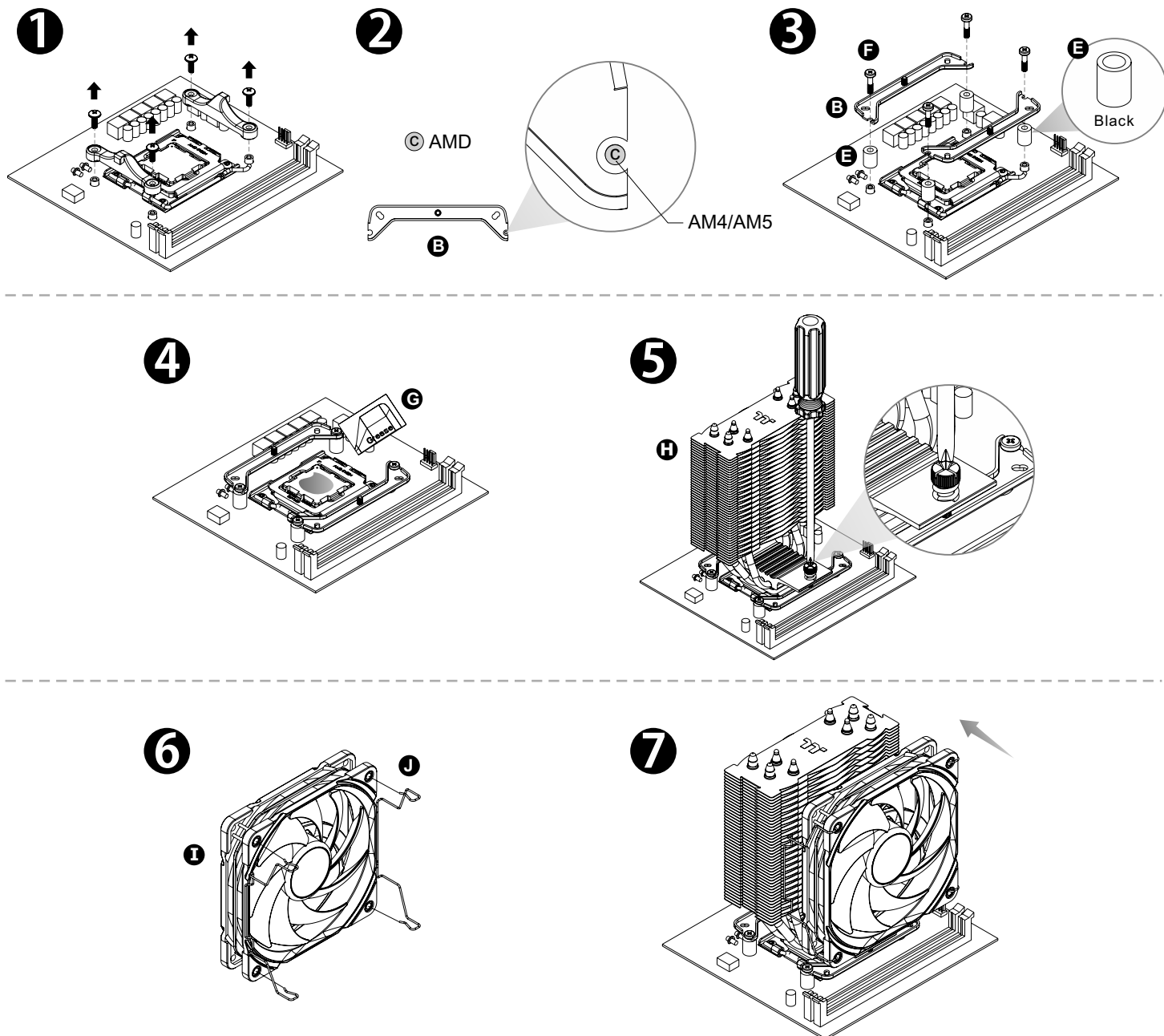


**J** x 2

## Intel Installation Guide



# AMD Installation Guide



## Fan & MB SYNC Installation Guide

**CAUTION** Please power off the PC and check the Positive and Negative ends on the connector before connecting the cable to mainboard. Connecting the wrong end can damage the fans.

