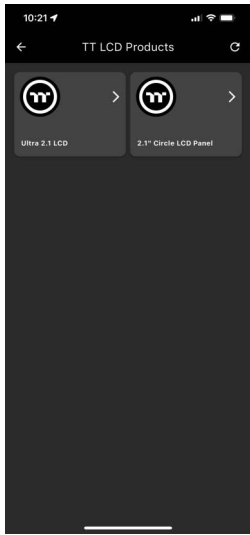
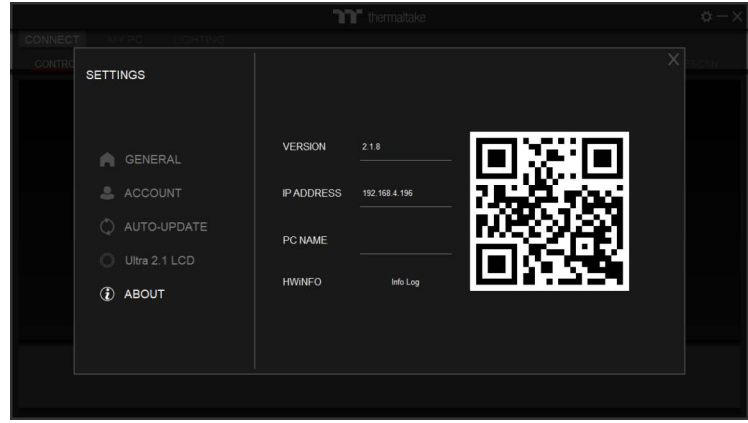
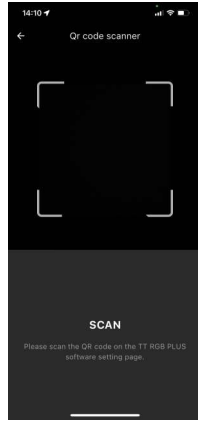
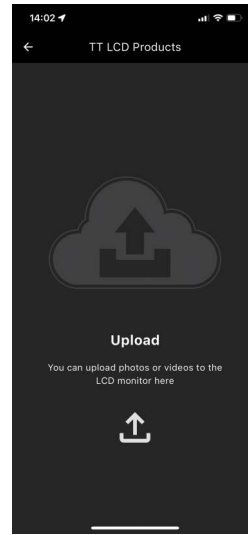


Download

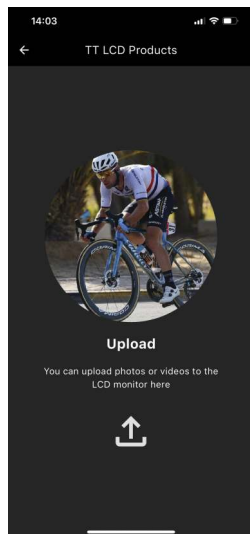
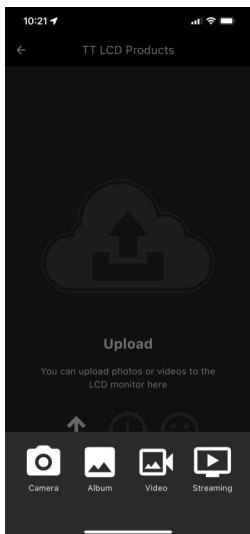
1 Download the PlayLink app and scan the QR Code on the TT RGB PLUS settings page to pair the PC.



2 After pairing, the LCD products will be shown based on the installed TT RGB PLUS.



3 Click the icon to select the items that need to be operated.



4 You can use a total of 4 functions:

- **Camera:** Instantly take a photo with your phone and upload it to the LCD screen.
- **Album:** Select a photo from your phone's album and upload it to the LCD screen.
- **Video:** Select a video from your phone's album and upload it to the LCD screen.
- **Streaming:** Use your phone's camera for live streaming directly to the LCD screen.

Support Products

2.1" CPU Water Block LCD

- TH V2 Ultra EX Series
- TOUGHLIQUID EX Pro Series
- TOUGHLIQUID Ultra RGB
- Floe Ultra RGB
- Floe RC Ultra

3.9" LCD Screen Kit

- TR 100 Series
- Ceres 300 Series
- Ceres 330 TG Series
- Ceres 500 TG Series
- The Tower 200 Series
- The Tower 250 Series
- The Tower 300 Series
- The Tower 500 Series
- The Tower 600 Series
- Divider 550 TG Ultra

2.1" Circle LCD Screen Kit

- Ceres 350 Series