



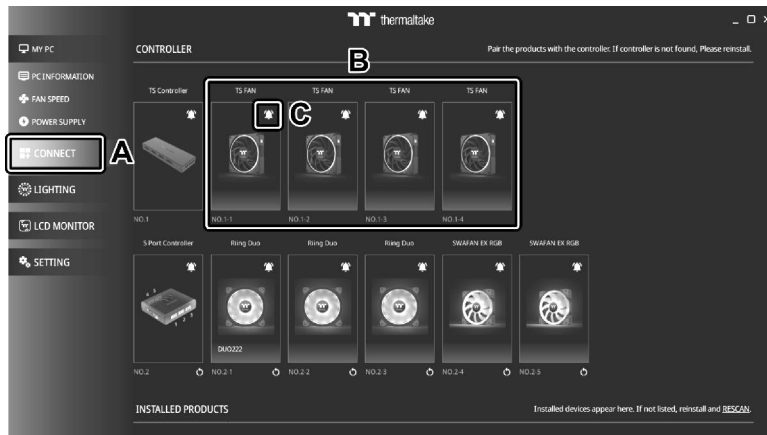
Please download TT RGB PLUS from Thermaltake's Official website.

<https://www.thermatake.com/downloads>

OS compatibility: Windows 10 & Windows 11

## TS Fan Software User Interface

### CONNECT-CONTROLLER

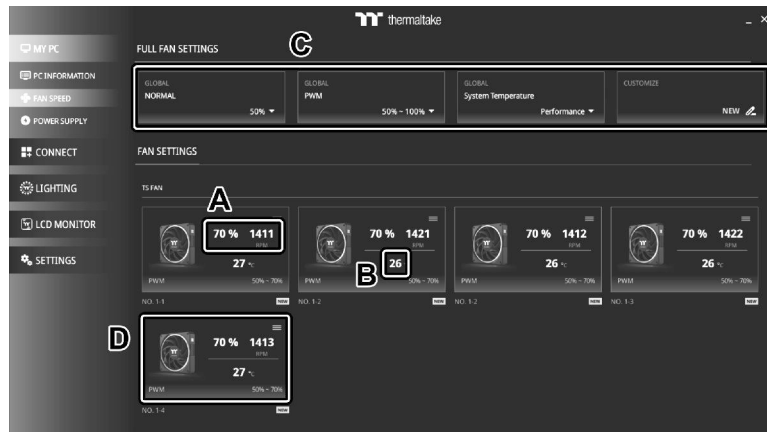


A. After installation of TT RGB PLUS, you can find the controllers on the "CONNECT" pages.

B. The "TS Fan" will automatically pair with the controller port.

C. Click the bell icon to confirm the "TS Fan" is connected successfully with the red light.

### MY PC-FAN SPEED



TS Fan Speed Information and PWM Performance Settings.

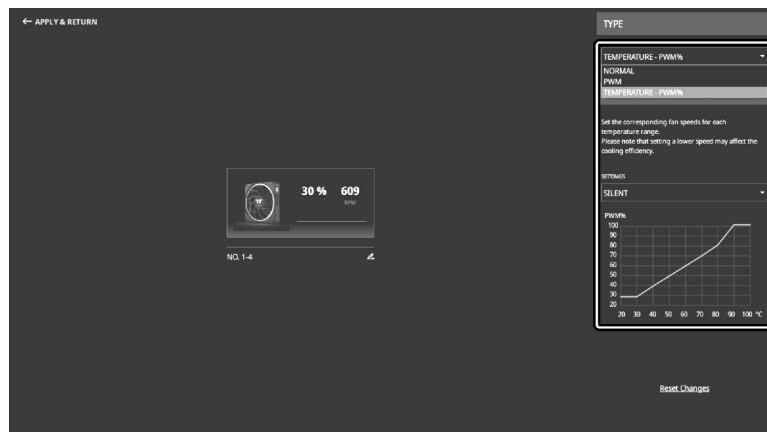
A. TS Fan real-time fan speed & TS Fan PWM%

B. TS Fan real-time temperature.

C. TS Fan global fan settings

- NORMAL: Set PWM% 0% → 100%
- PWM: Set PWM silent (50%) to PWM performance (100%).
- Temperature: Set PWM% by TS Fan temperature.

D. Click the fan to enter the single fan speed setting.



TS Fan Single Fan Settings

• NORMAL: Set PWM% 0% → 100%

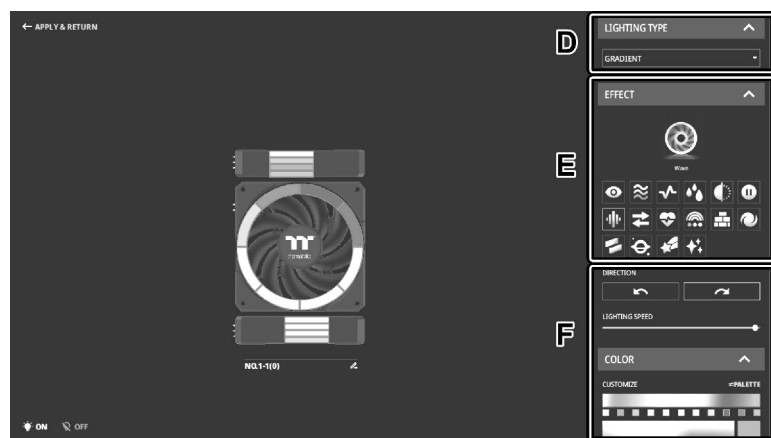
• PWM: Set PWM silent (50%) to PWM performance (100%).

• Temperature: Set PWM% by TS Fan temperature.

# LIGHTING



- A. TS Fan global lighting settings profiles.
- B. Shows the number of TS Fans with configurable RGB lighting.
- C. Click the TS Fan to enter the single fan RGB lighting setting.



- D. Lighting Type:  
User can select Single/Gradient/Environment lighting type.
- E. Lighting Effect:  
Select the RGB lighting effects.
- F. Lighting Attribute Settings:  
Lighting direction, speed, palette, hue, and lightness settings.



The software interface may vary with feature updates. Please download the latest software version from [www.thermaltake.com](http://www.thermaltake.com)