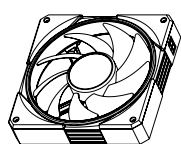




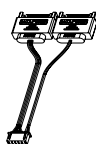
### Parts List



A x 3



B x 3



C x 1



D x 1



E x 1



F x 1



G x 12

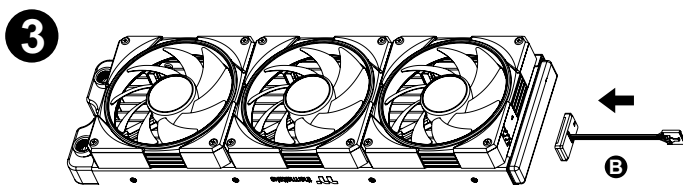
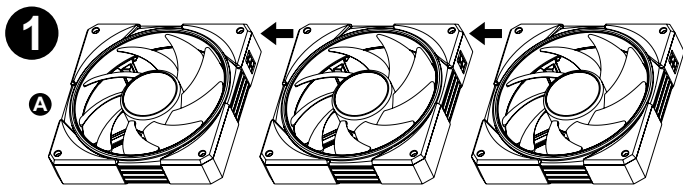


H x 12

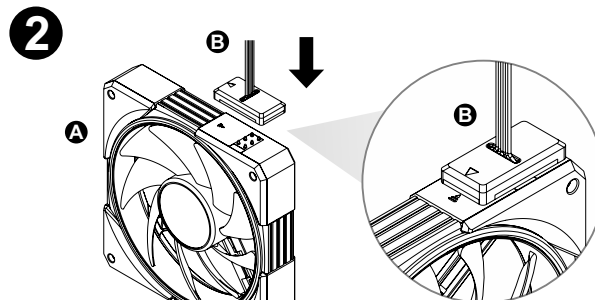


I x 2

### Installation Guide



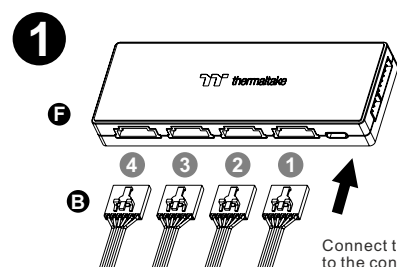
Install the fans properly onto the radiator.



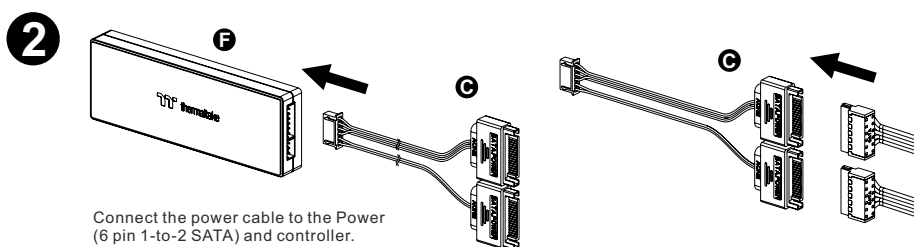
### Controller Installation Guide



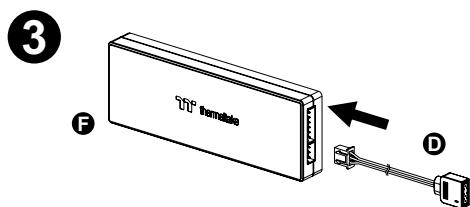
Please power off the PC and check the Positive and Negative ends on the connector before connecting the cable to mainboard. Connecting the wrong end can damage the controller.



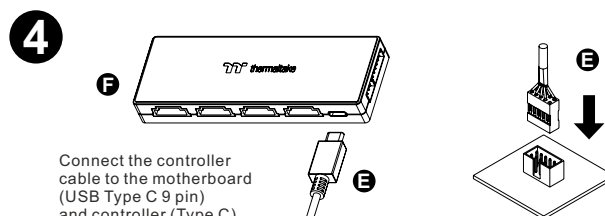
Connect the fans to the controller.



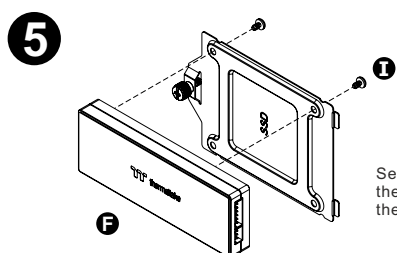
Connect the power cable to the Power (6 pin 1-to-2 SATA) and controller.



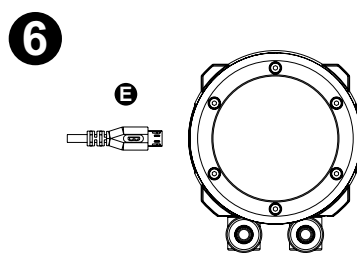
Connect the ARGB signal cable to the motherboard (3 pin 5V ARGB) and controller.



Connect the controller cable to the motherboard (USB Type C 9 pin) and controller (Type C).



Secure the screw into the mounting hole on the SSD bracket.



### Extra information

You can plug the "micro USB" in the pump if needed while using an AIO cooler