

TT RGB Plus Software control interface

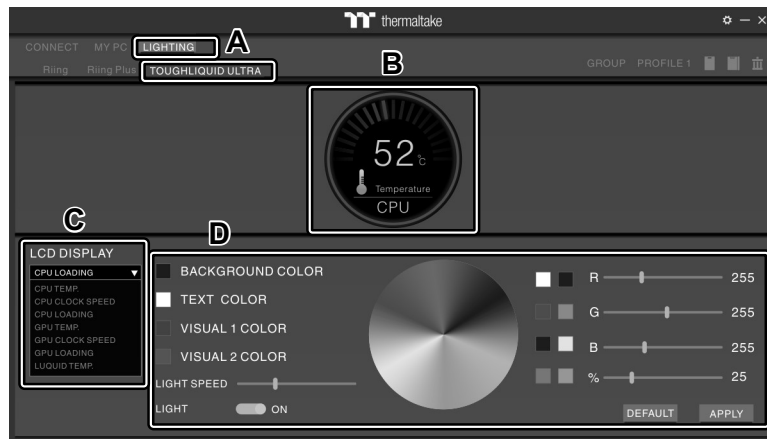
Please download TT RGB PLUS from Thermaltake's Official website.

<https://www.thermaltake.com/downloads>

OS compatibility: Windows 10

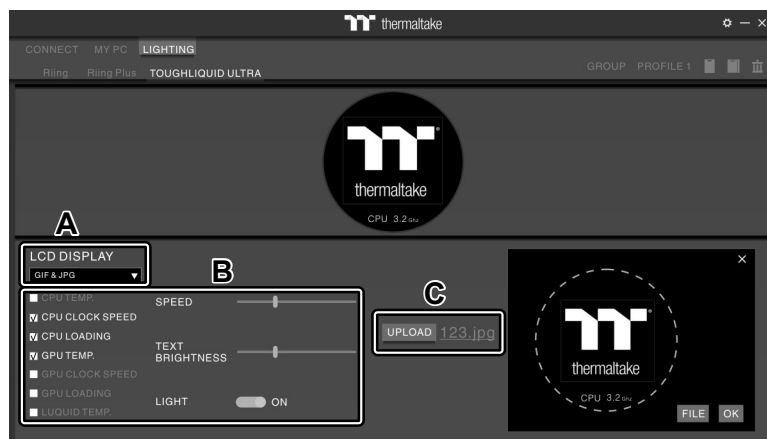
TOUGHLIQUID Software User Interface

LIGHTING



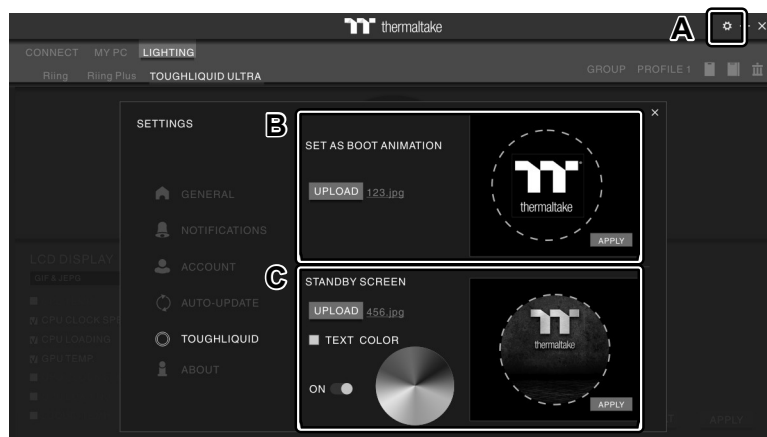
- A. After installation of TT RGB PLUS, you can select "TOUGHLIQUID ULTRA" on the "LIGHTING" page.
- B. Preset the CPU water block LCD.
- C. LCD DISPLAY function list.
- GIF & JPG (Upload picture to LCD display)
 - CPU TEMP.
 - CPU CLOCK SPEED
 - CPU LOAD
 - GPU TEMP.
 - GPU CLOCK SPEED
 - GPU LOAD
 - LIQUID TEMP.
 - CAROSUEL (Switches between CPU/GPU/Liquid information)
- D. LCD visual effect settings.
- Set LCD display background, text and visual color, or turn off LCD screen.

GIF & JPG



- A. Select "GIF & JPG" form "LCD DISPLAY".
- You can upload a GIF or JPG file to show the picture on the LCD screen.
- B. Set the LCD display text information, speed and brightness, or turn off LCD screen.
- C. Click "UPLOAD" to upload the picture. (GIF and JPG files only)

SETTINGS



- A. Click the gear icon on the upper right corner to enter the "SETTINGS" menu.
- B. Upload the picture to set as LCD boot animation. (GIF only)
- C. Upload the picture to set as LCD standby screen. (JPG only)



software interface may vary with feature update, please download the latest user manual from our www.thermaltake.com