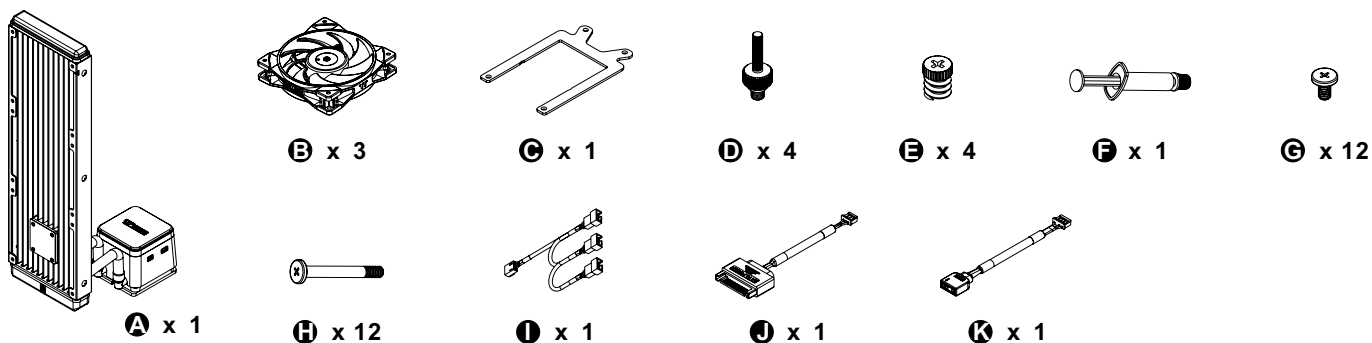
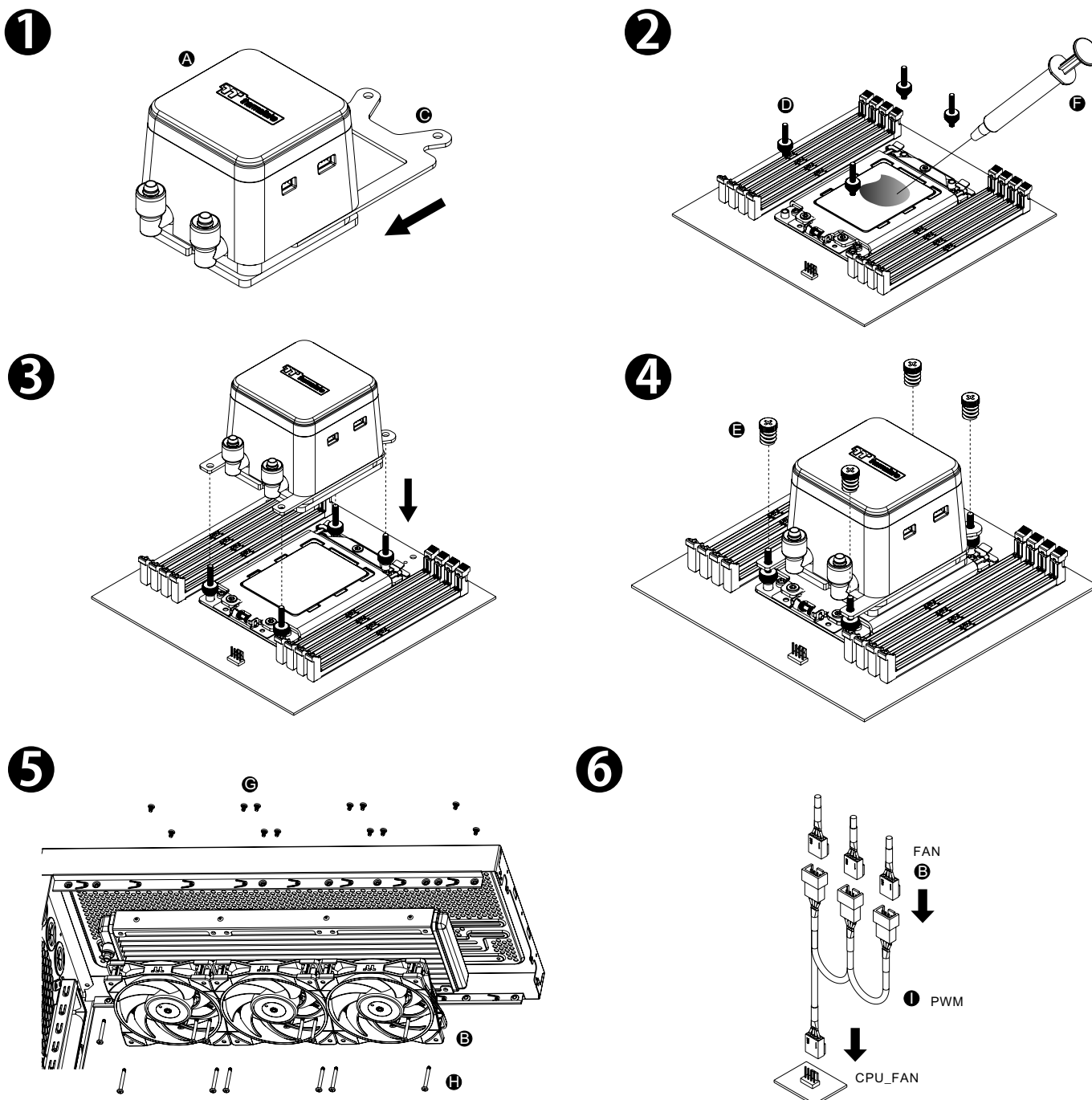




Parts List

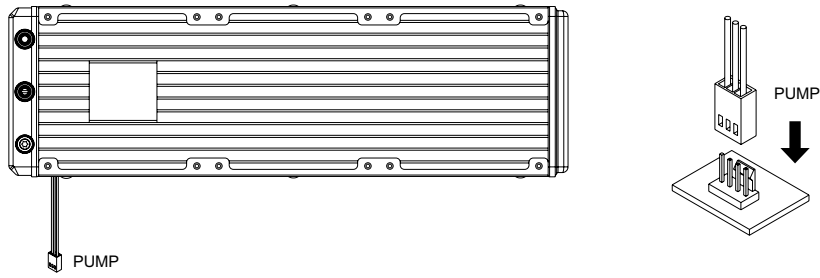


Installation Guide



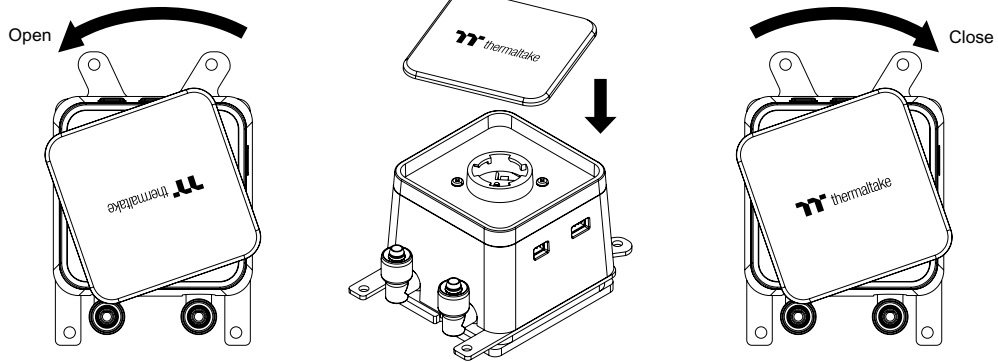
Installation Guide

7



8

Open the cap counterclockwise, and lock it in clockwise direction. Set the logo to an angle that fits your setup better.

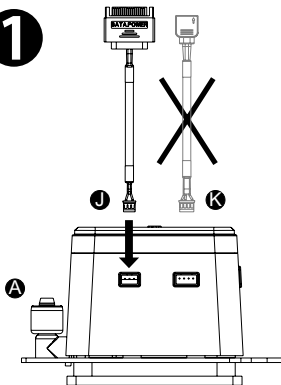


ARGB Controller Installation Guide

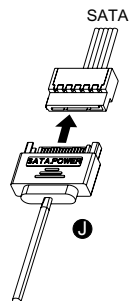
CAUTION

To use the ARGB Controller, please only connect Cable J to the water block

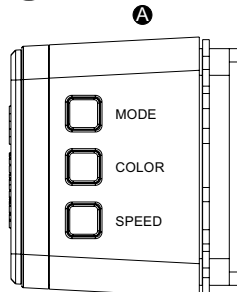
1



2



3



1. Light Mode:

Switch over between 7 LED modes.

Rainbow → Full light → RGB Spectrum → Off → Flow → Radar → Pulse → Blink

2. Color Mode:

When light mode is in Full Lighted, Pulse and Blink :

Switch over 8 LED colors .

Red → Yellow → Green → Teal → Blue → White → Purple → Rainbow

When light mode is in Ripple :

Switch over 7 LED colors .

Red → Yellow → Green → Teal → Blue → White → Purple

When light mode is in RGB Spectrum:

Click to memorize and lock the color you want, click again to unlock the 256 colors auto rotation.

When light mode is in Wave and Flow :

LED color can not be adjusted.

3. Light Speed:

Switch over between 4 light modes.

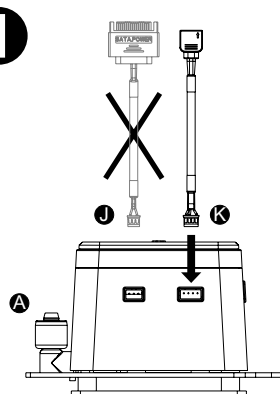
Slow → Normal → Fast → Extreme

MB SYNC Installation Guide

CAUTION

1. To use Motherboard RGB Software, please only connect Cable K to the water block
2. Please power off the PC and check the Positive and Negative ends on the connector before connecting the cable to the mainboard. Connecting the wrong end can damage the product.

1



2

