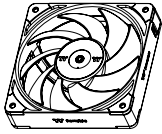




## Parts List



A x 3



B x 3



C x 3



D x 12



E x 12



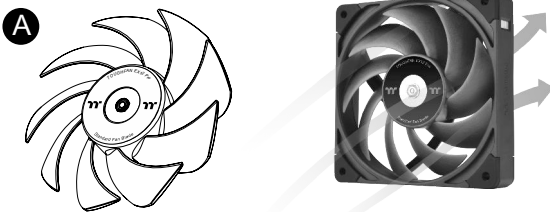
F x 1

## Installation Guide

### 1 Choose your fan blade type

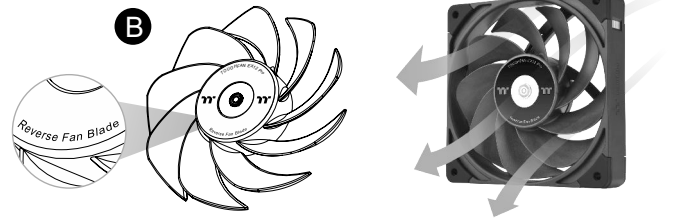
**Standard Fan Blade** (Pre installed on the fan **A**)

Airflow Direction:  
**Air Exhaust**

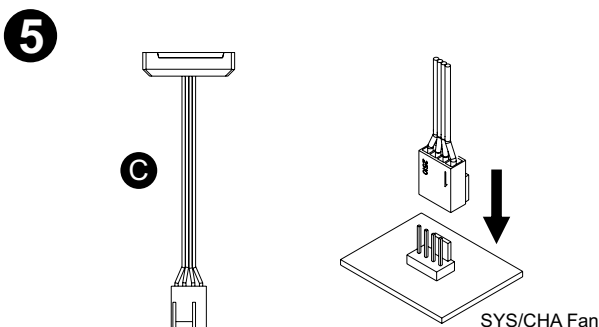
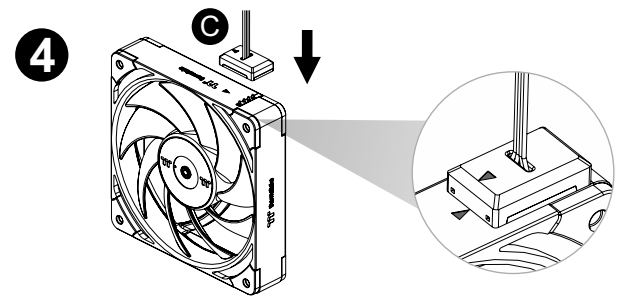
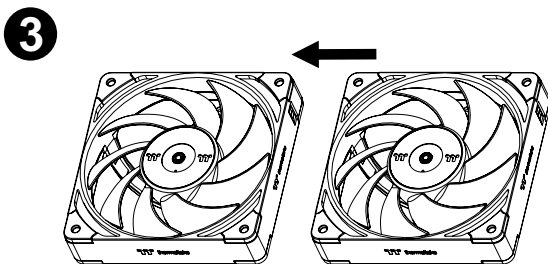
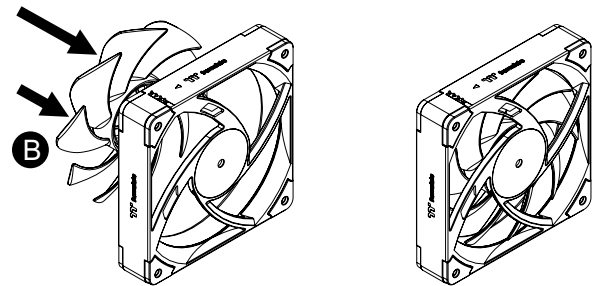
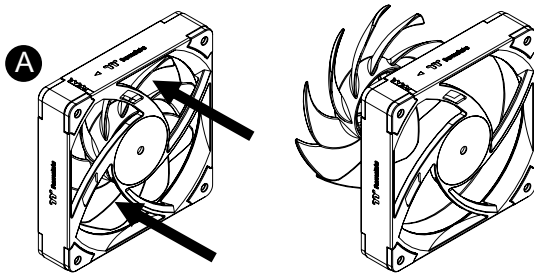


**Reverse Fan Blade**

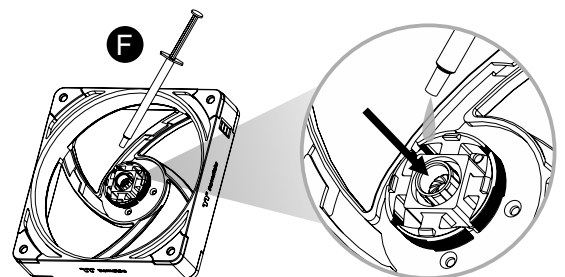
Airflow Direction:  
**Air Intake**



### 2 Replace fan blades



## Oil Setup Guide



After replacing the fan blades several times, readd the oil into the bearing (about 0.1ml)