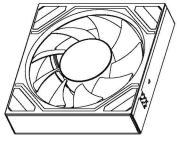




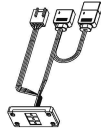
Parts List



A x 1



B x 1



C x 1



D x 4



E x 4



F x 4



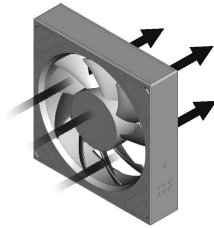
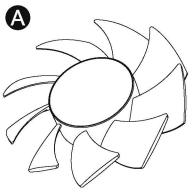
G x 1

Installation Guide

1 Choose your fan blade type

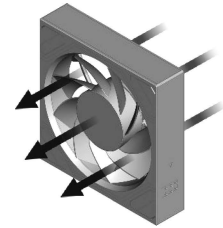
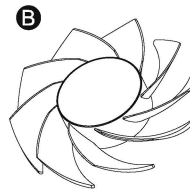
Standard Fan Blade (Pre installed on the fan A)

Airflow Direction: **Air Exhaust**

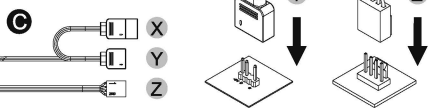
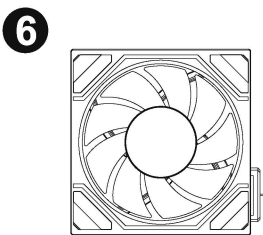
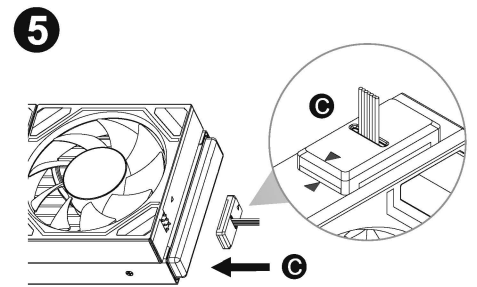
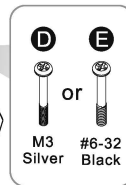
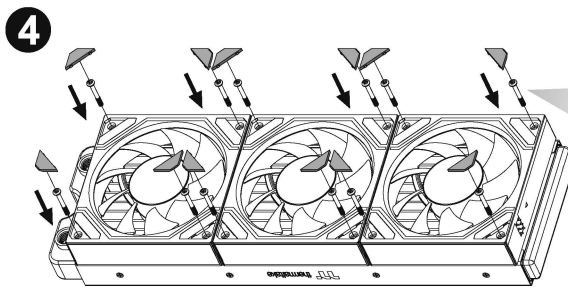
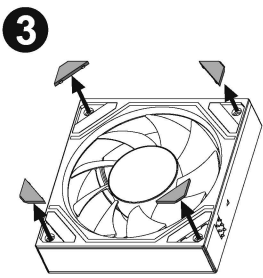
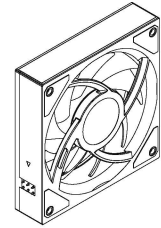
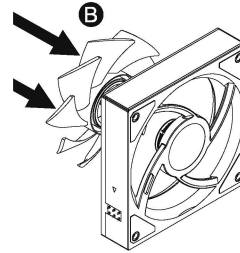
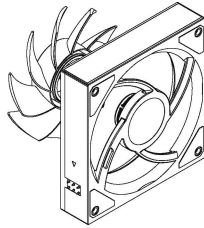
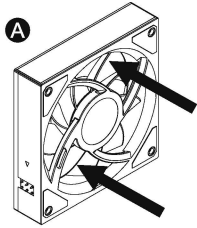


Reverse Fan Blade

Airflow Direction: **Air Intake**

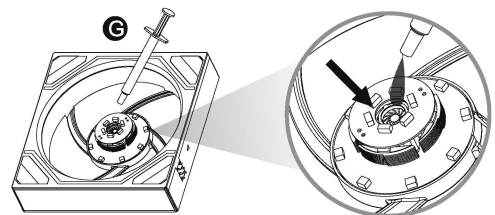


2 Replace fan blades



CAUTION Please power off the PC and check the Positive and Negative ends on the connector before connecting the cable to motherboard. Connecting the wrong end can damage the fans.

Oil Setup Guide



After replacing the fan blades several times, add the oil into the bearing (about 0.1ml)