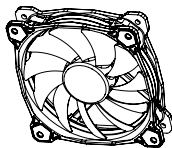


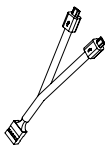
Parts List



A x 3
Fan



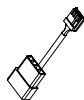
B x 1
Controller



C x 1
Controller Cable



D x 1
Bridge Cable



E x 1
Power Cable



F x 12
Short Screw



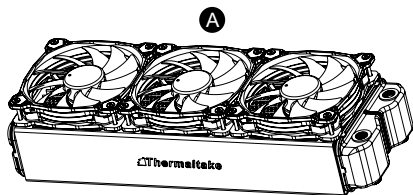
G x 12
Long Screw



H x 1
Velcro

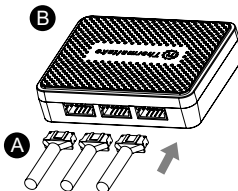
Installation Guide

1



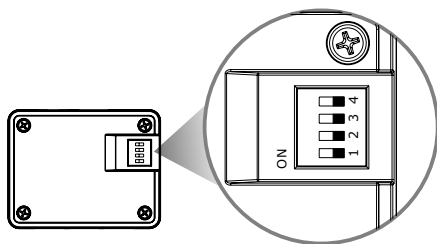
Install the fans properly onto the radiator.

2



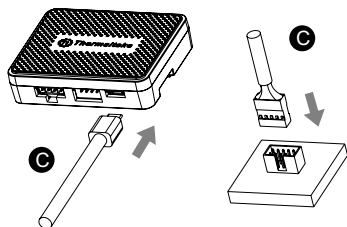
Connect the 4pin fan cable onto the controller.

3



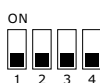
Set the DIP switch on the back side of the controller to assign the number of the controller

4

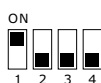


Connect the controller cable onto the mainboard (USB 2.0 9 pin) and controller.

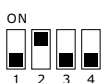
NO.1



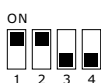
NO.2



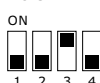
NO.3



NO.4



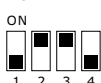
NO.5



NO.6



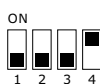
NO.7



NO.8



NO.9



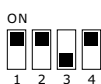
NO.10



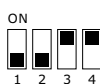
NO.11



NO.12



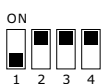
NO.13



NO.14



NO.15

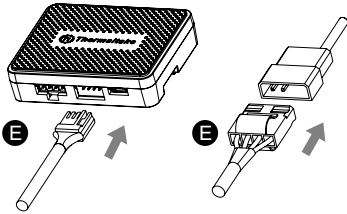


NO.16



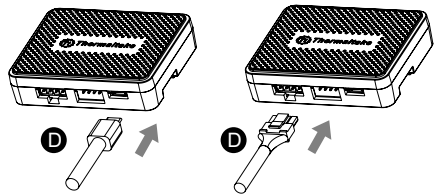
Installation Guide

5



Connect the power cable to the 4pin Molex connector and controller.

6



If you want to connect two or more connectors, you can use the bridge cable to connect the controllers.

Riing RGB Software control interface

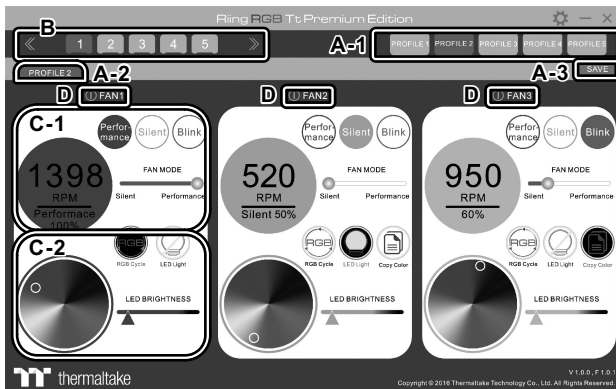
Please download software from Thermaltake Official website.

http://www.thermaltake.com/products-model.aspx?id=C_00002901

or search "Riing 12" on the official website.

OS compatibility: Windows 7 / 8 / 8.1 / 10

Software User Interface



A. Riing RGB software Profile Setting

A-1 Set up a profile: Choose a Profile and set up the Fan Speed Mode and LED Lighting Mode, then click the SAVE icon(A-3) to store your settings to the software.

A-2 Save a profile to controller: Select a profile and a controller, then click the Save icon to assign the profile to the controller.

B. Follow the Installation Guide step 3, you can set up the number of the controller.

C. Fan Speed Mode and LED Lighting Mode

C-1 Performance Mode: 500~1400RPM (Duty cycle 0%~100%)

Silent Mode: 500~950RPM (Duty cycle 0%~50%)

Blink: LED light will start blinking in order to locate the fan if you have forgotten where the fan installed.

(If the LED is off, the LED will blink with the previously chosen color)

Fan Mode: Drag the mouse to change the fan duty cycle from 50% ~ 100%

C-2 Color Selection: Click the color palette to choose a color you want, the selected color will show on the Fan Speed icon

RGB Mode: Click the RGB Cycle icon to switch to RGB 256 color mode

LED On/Off: Click the LED Light icon to turn on or off the LED light

Brightness: Drag the mouse to adjust LED light brightness

D. Fan On/Off: User can switch off the fan speed and led control function in the software if the fan is not plug into the controller.