



## TT RGB Plus Software control interface

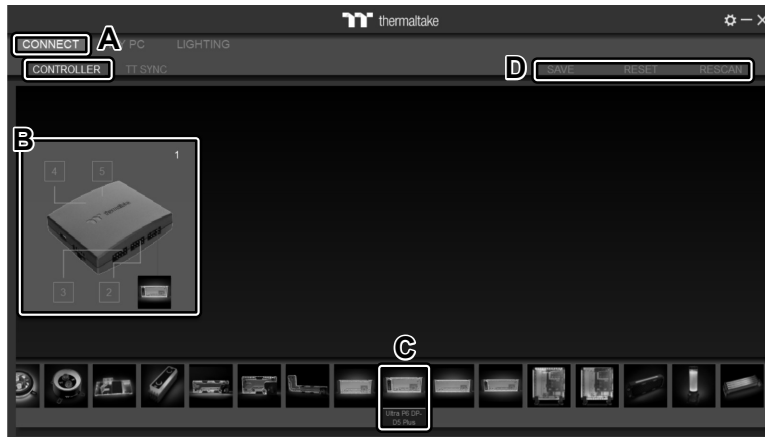
Please download TT RGB PLUS from Thermaltake's Official website.

<https://www.thermaltake.com/downloads>

OS compatibility: Windows 10 & Windows 11

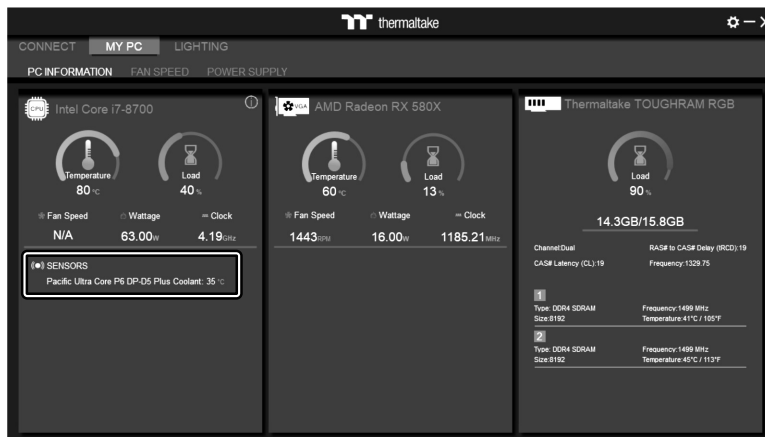
### Pacific Ultra Core P6 DP-D5 Plus Software User Interface

#### CONNECT-CONTROLLER



- A. After installation of TT RGB PLUS, you can find controllers on the "CONNECT" & "CONTROLLER" pages.
- B. Click the controller port to make the "Ultra P6 DP-D5 Plus" glow red lighting to pair.
- C. Drag and drop to pair the "Ultra P6 DP-D5 Plus" with the controller port.
- D. SAVE: Save the controller pairing settings.  
RESET: Reset the controller pairing.  
RESCAN: Rescan the controllers.

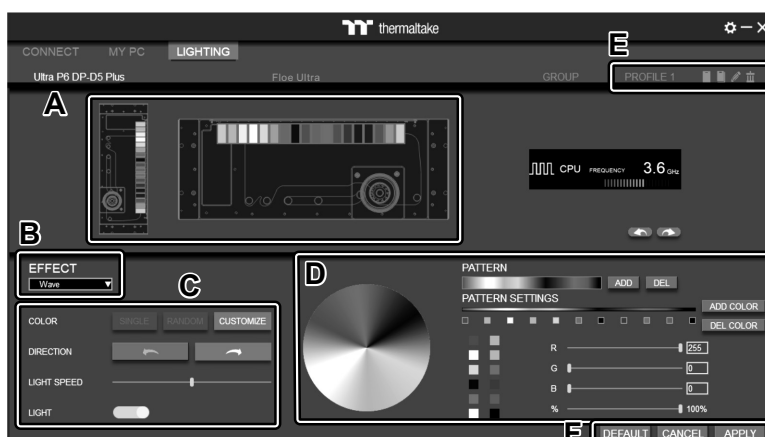
#### MY PC-PC INFORMATION



#### SENSORS

Show the Pacific Ultra Core P6 DP-D5 Plus Coolant Temperature.

#### LIGHTING



- A. Preview and edit the lighting effect and LCD monitor. (Click the screen to switch between the lighting effect and LCD control.)
- B. Select 23 Lighting Effects.
- C. Lighting effect settings: Color, Direction, Light Speed, Light.
- D. Lighting color settings.
- E. Profile Settings: New, Copy, Edit, Delete
- F. DEFAULT: Reset the lighting effects.  
CANCEL: Deselect the LEDs for the preview screen.  
APPLY: Execute and store lighting effects.

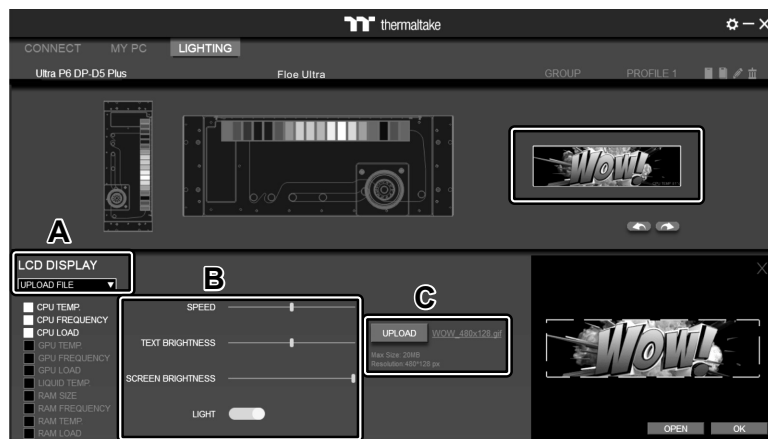
# TT RGB Plus Software control interface

## LCD DISPLAY



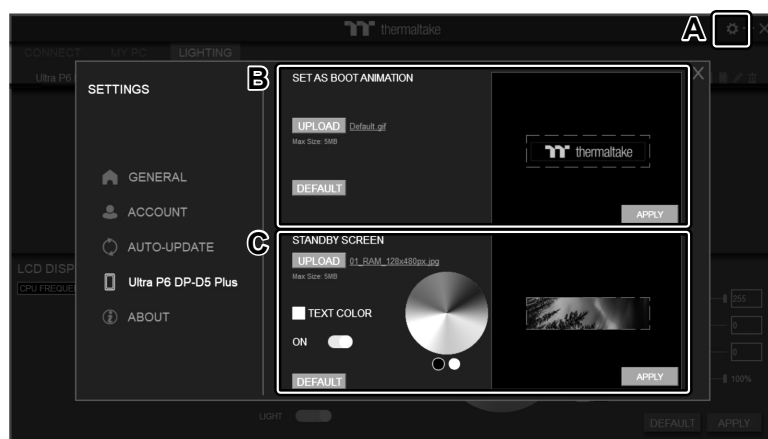
- Preview the Pacific Ultra Core P6 DP-D5 Plus LCD Screen. (Click the screen to switch between the lighting effect and LCD control.)
- LCD DISPLAY function list.
  - UPLOAD FILE
  - CPU TEMP.
  - CPU FREQUENCY
  - CPU LOAD
  - GPU TEMP.
  - GPU FREQUENCY
  - GPU LOAD
  - RAM SIZE
  - RAM FREQUENCY
  - RAM TEMP.
  - RAM LOAD
  - LIQUID TEMP.
  - CAROUSEL  
(Switches between CPU/GPU/Liquid information)
  - WINDOW STREAM
  - WEATHER
  - CLOCK
- LCD visual effect settings.  
Set LCD background, text and visual color, and screen brightness, or turn off the LCD screen.

## UPLOAD FILE



- Select "UPLOAD FILE" from "LCD DISPLAY".  
You can upload a file to show on the LCD screen. (File type: GIF, JPG, PNG, MOV, MP4, AVI)
- Set the LCD text information, speed and brightness, rotate the LCD screen, or turn off the LCD.
- Click "UPLOAD" to upload the picture. (Max size: 20MB)

## SETTINGS



- Click the gear icon on the upper right corner to enter the "SETTINGS" menu.
- Upload the picture to set as LCD boot animation. (GIF only, Max size: 5MB)
- Upload the picture to set as LCD standby screen. (JPG only, Max size: 5MB)



The software interface may vary with feature updates, please download the latest software version from [www.thermaltake.com](http://www.thermaltake.com)