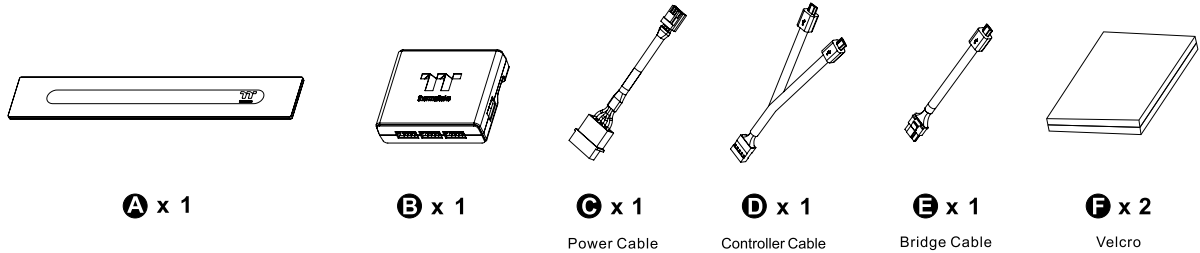
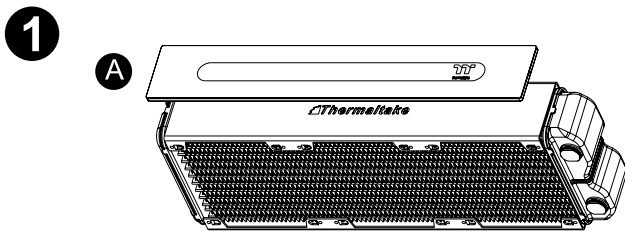


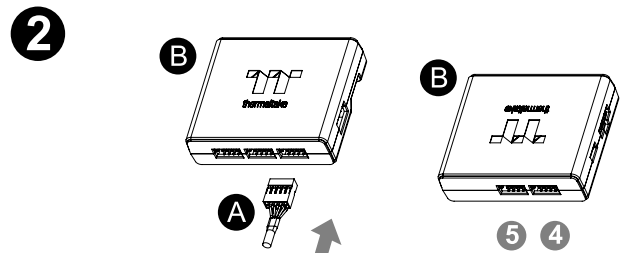
## Parts List



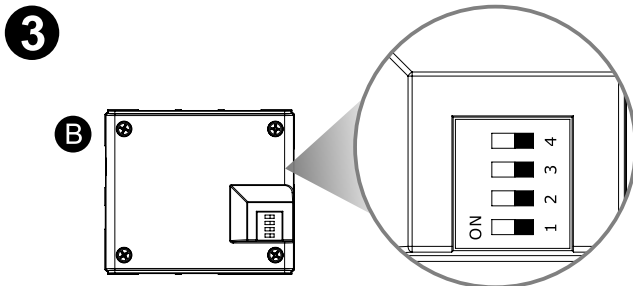
## Installation Guide



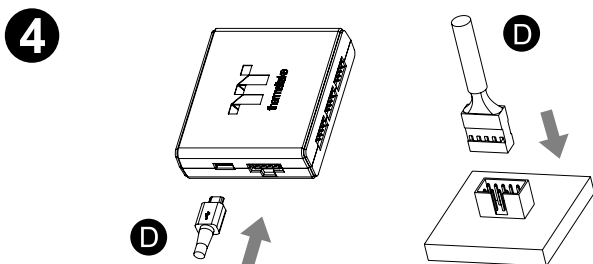
Install the LED Module on the radiator.  
•Radiator not included



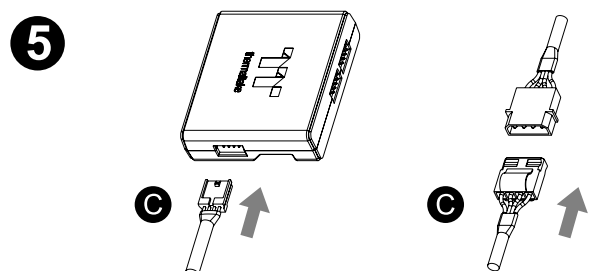
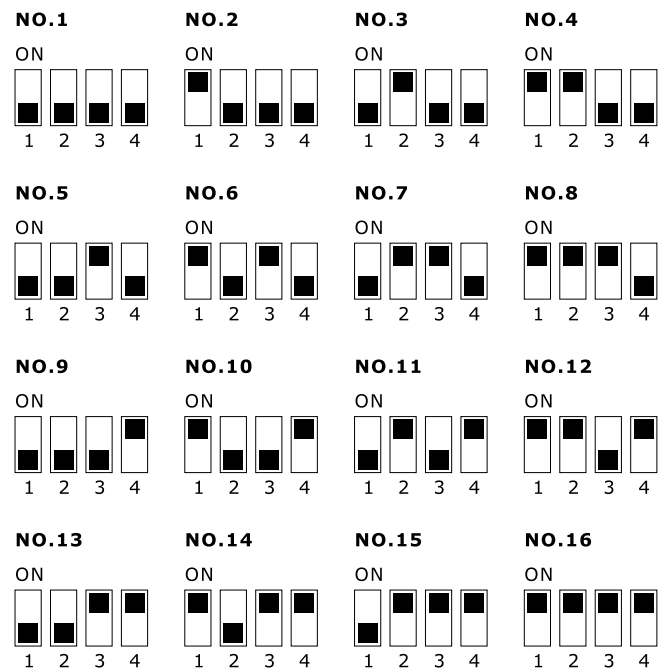
Connect the panel cable onto the controller.



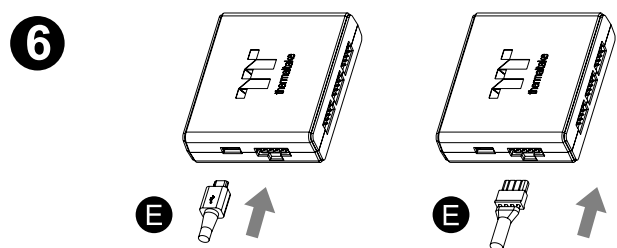
Set the DIP switch on the back side of the controller to assign the number of the controller



Connect the controller cable onto the mainboard (USB 2.0 9 pin) and controller.



Connect the power cable to the 4pin Molex connector and controller.



If you want to connect two or more controllers, you can use the bridge cable to connect the controllers.

# Riing Plus RGB Software control interface

Please download software from Thermaltake Official website.

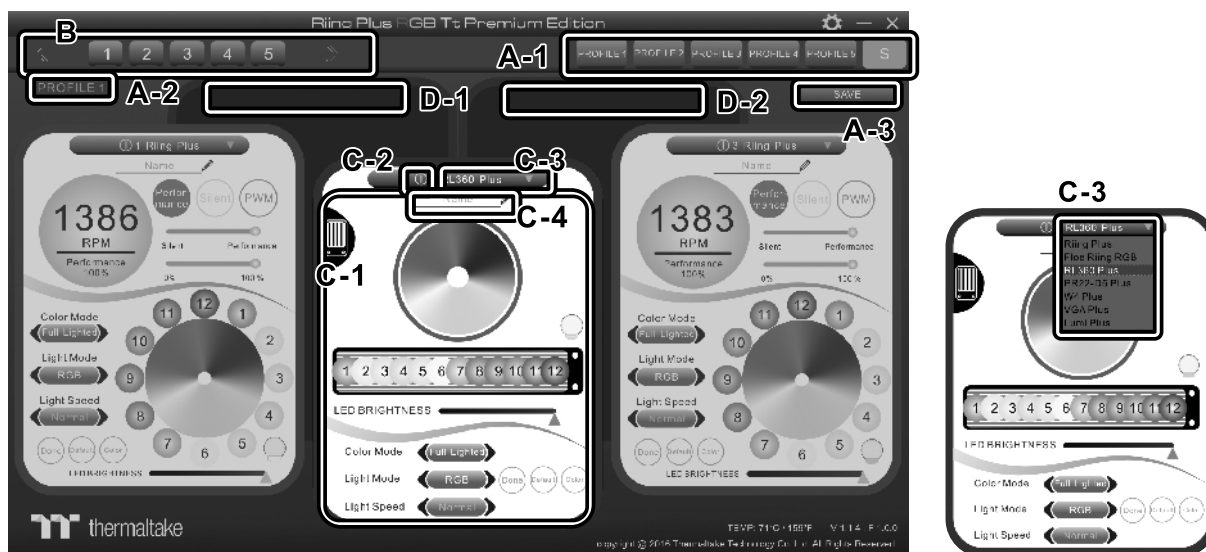
[www.thermaltake.com/home.aspx](http://www.thermaltake.com/home.aspx)

and search "RL360 Plus" on the official website.

OS compatibility: Windows 7 / 8 / 8.1 / 10

When you open the software, choose the "RL360 Plus" in the drop-down list(C-3) first.

## 1. Software User Interface



### A. Riing Plus RGB software Profile Setting

A-1 Set up a profile: Choose a Profile and set up the LED Lighting Mode, then click the SAVE icon(A-3) to store your settings to the software.

A-2 Save a profile to controller: Select a profile and a controller, then click the Save icon to assign the profile to the controller.

### B. Follow the Installation Guide step 3, you can set up the number of the controller

### C. LED Lighting Mode

Copy Color, Full Light, Sound Control, Flow, RGB Spectrum, Ripple, Blink, Pulse, Wave, Cross, Thermal, Shooting Star

C-1 LED Selection: set up the LEDs lighting, color, and speed.

Light Mode: Choose a lighting mode

Color Mode: Choose the LEDs color

Light Speed: Set up the speed of the LEDs light

LED Spot & Color Palette: Choose the color of each of the individual LEDs by clicking the color palette

Done: Save your setting

Default: Reset the LED setting back to the default

Brightness: Drag the mouse to adjust LED light brightness.

LED On/Off: Click the LED Light icon to turn on or off the LED light

RGB Color Code: Enter the Decimal Code of Red, Green, and Blue to set the LEDs color

C-2 LED On/Off: User can switch off the LED control function in the software if the fan is not plug into the controller.

C-3 Drop-down list: click the product name to choice another you want.

C-4 Product note: Enter note here.

D-1 & D-2. Product Selection: click the control panel to rotate it to the front

## 2. Mobile APP Connection Password

To connect the Riing Plus RGB APP, please connect the PC to your wireless first, and click the Password setting under the software setting menu, set up your connection password. The Riing Plus RGB APP will ask for your password every time when starting the APP.

For more information please visit [www.thermaltake.com](http://www.thermaltake.com)

