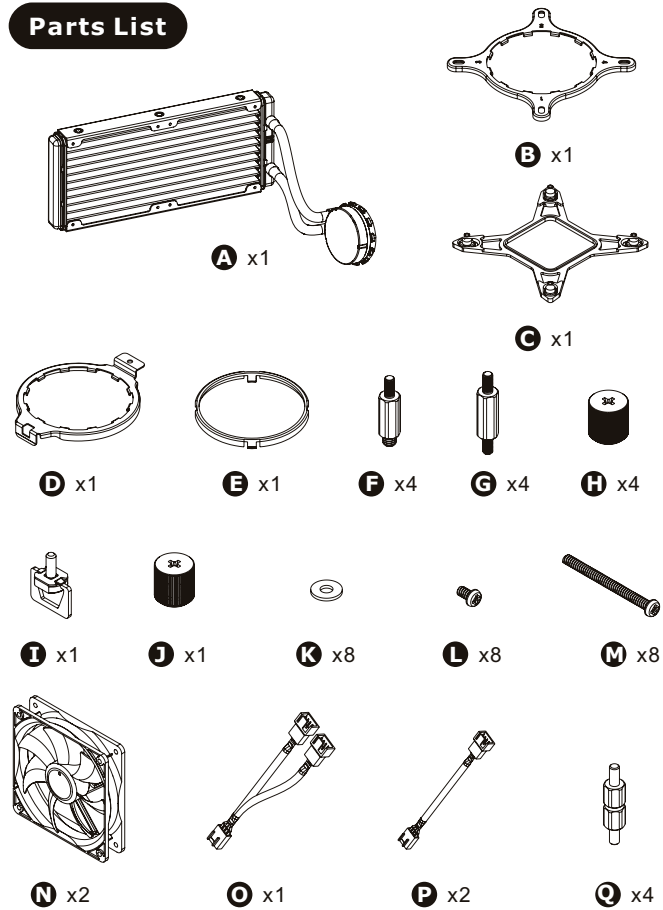
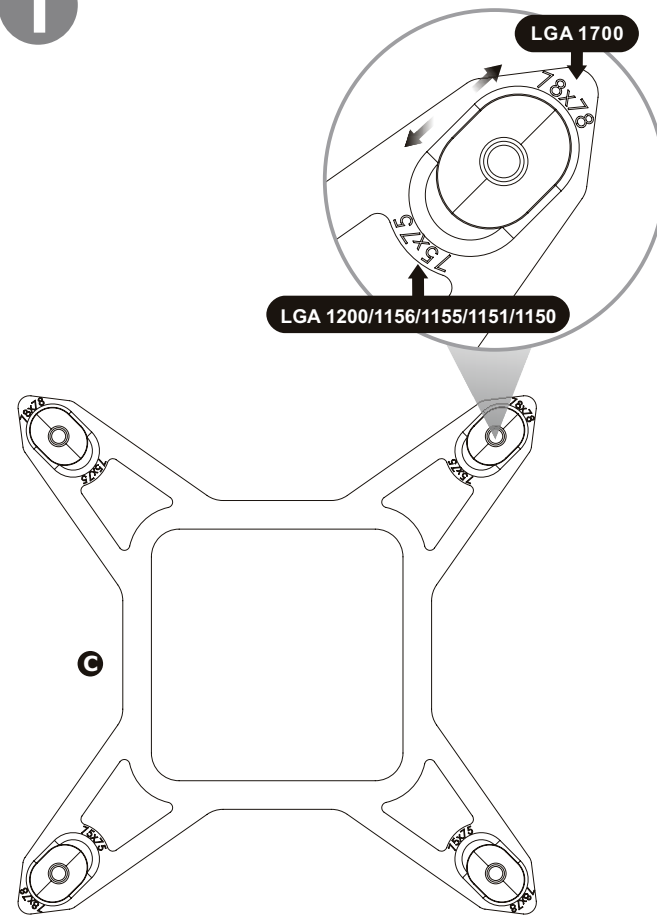


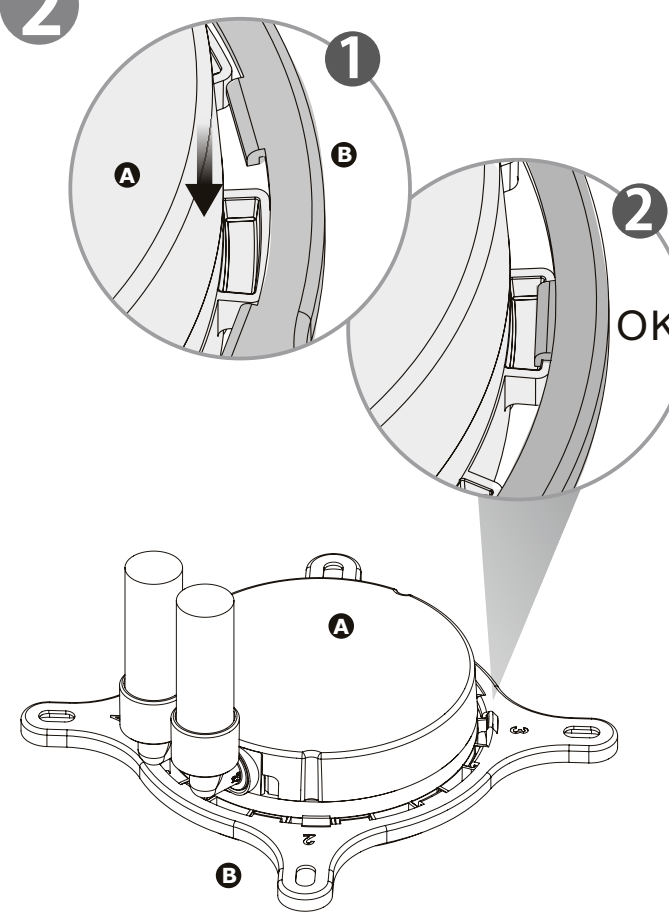
Parts List



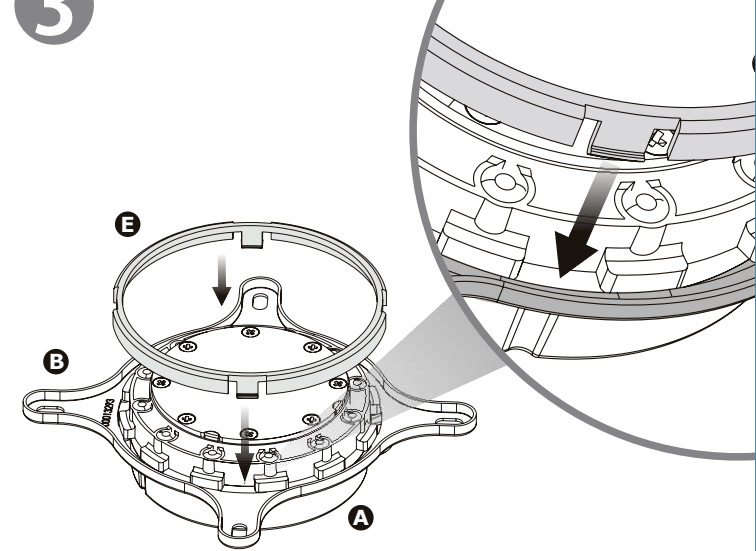
1



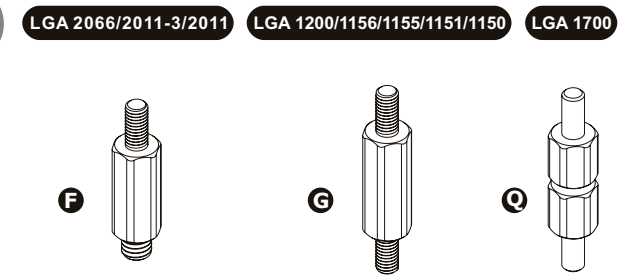
2



3



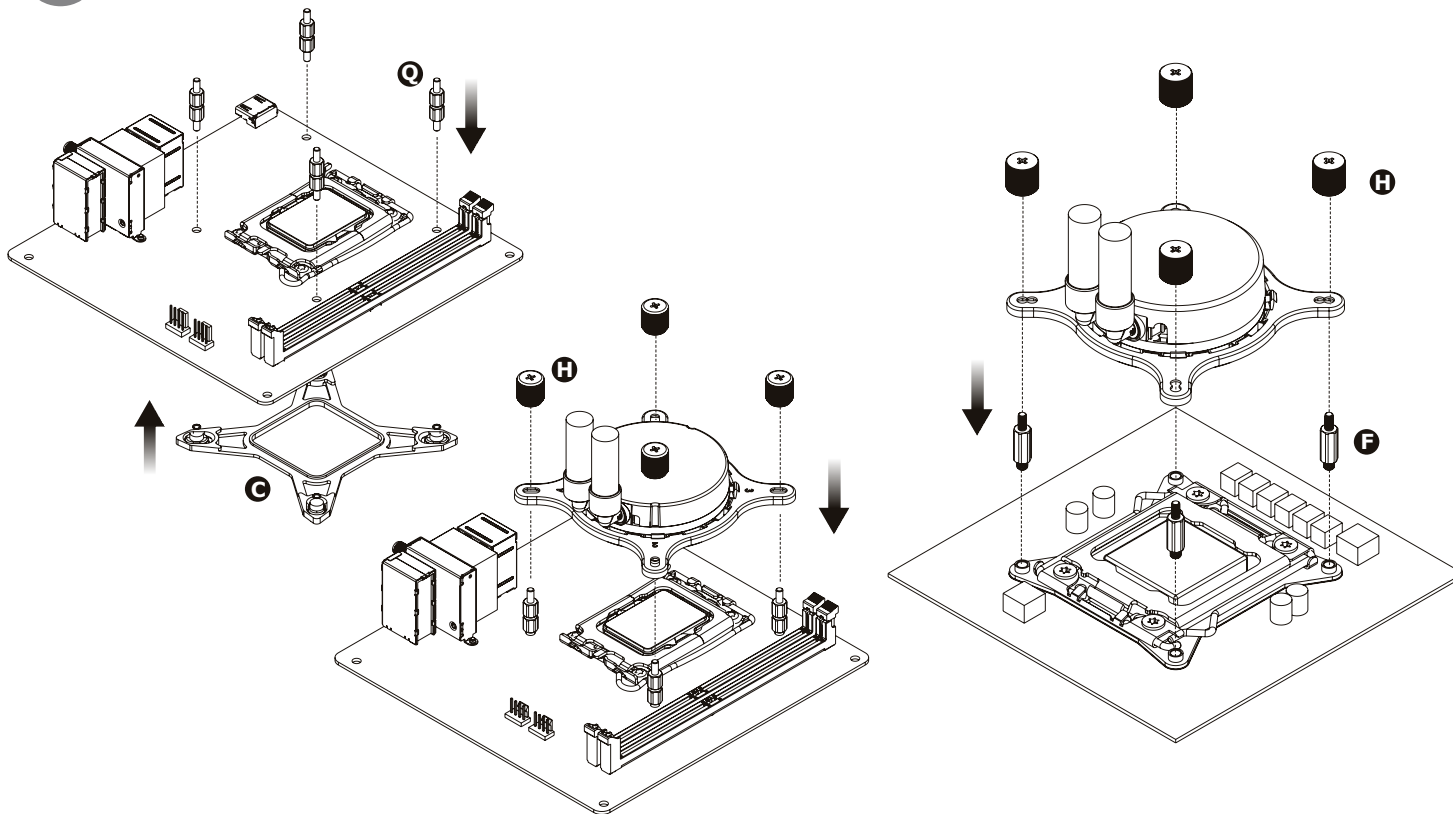
4



5

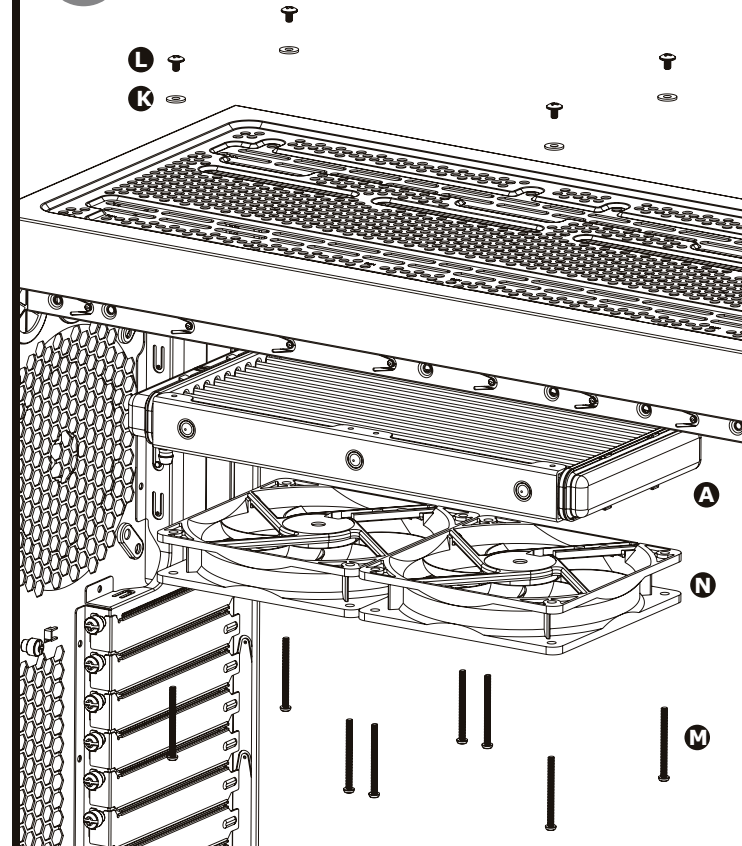
LGA 1700/1200/1156/1155/1151/1150

LGA 2066/2011-3/2011



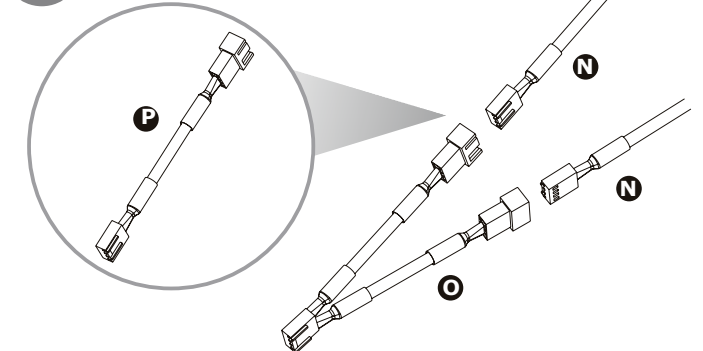
6

Compatibility may vary based on chassis design.

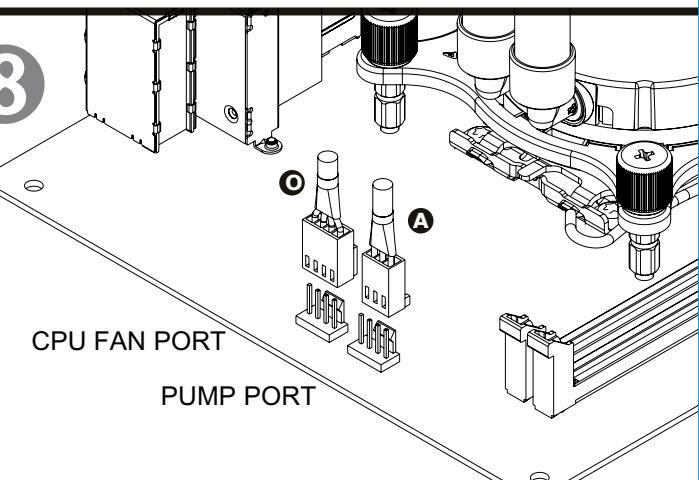


7

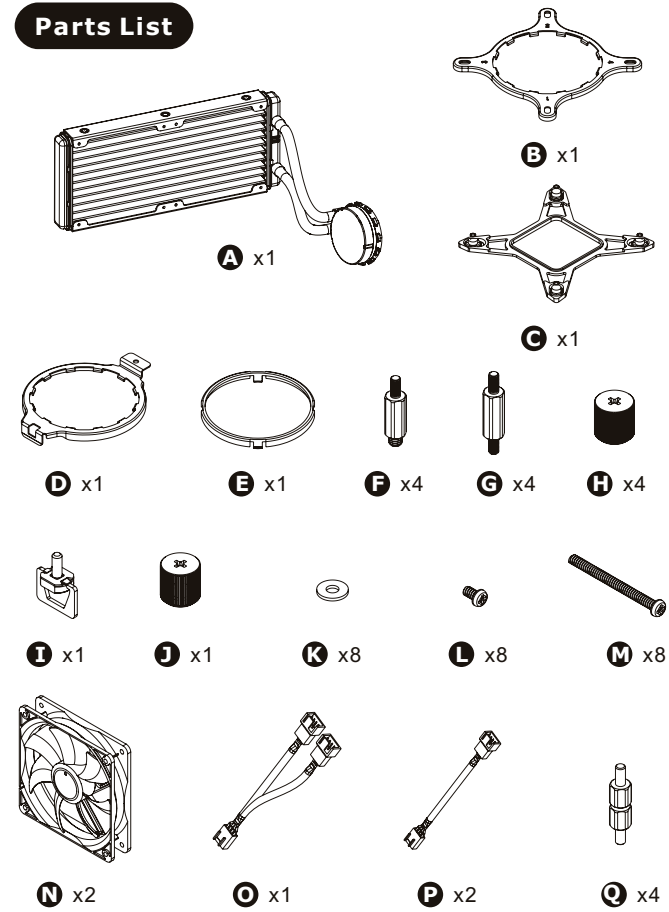
You can lower the PWM by installing the P between P and N fan cable.



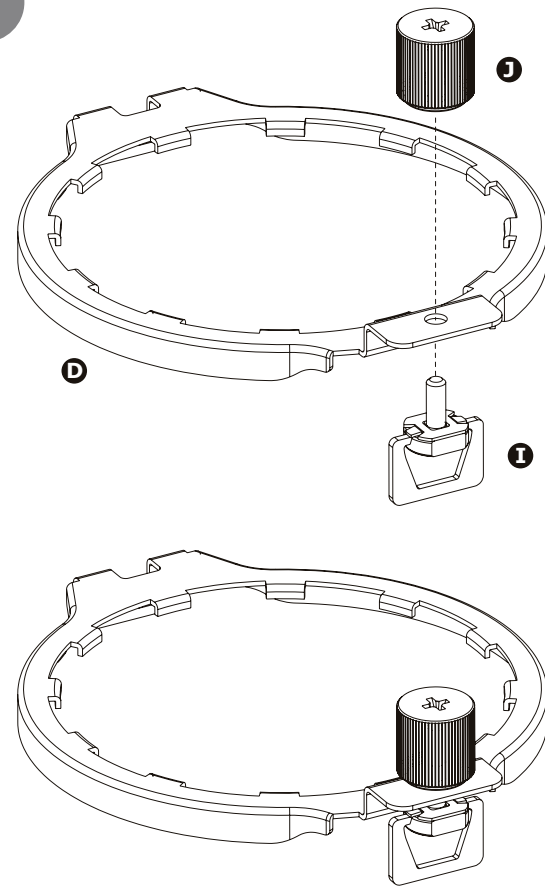
8



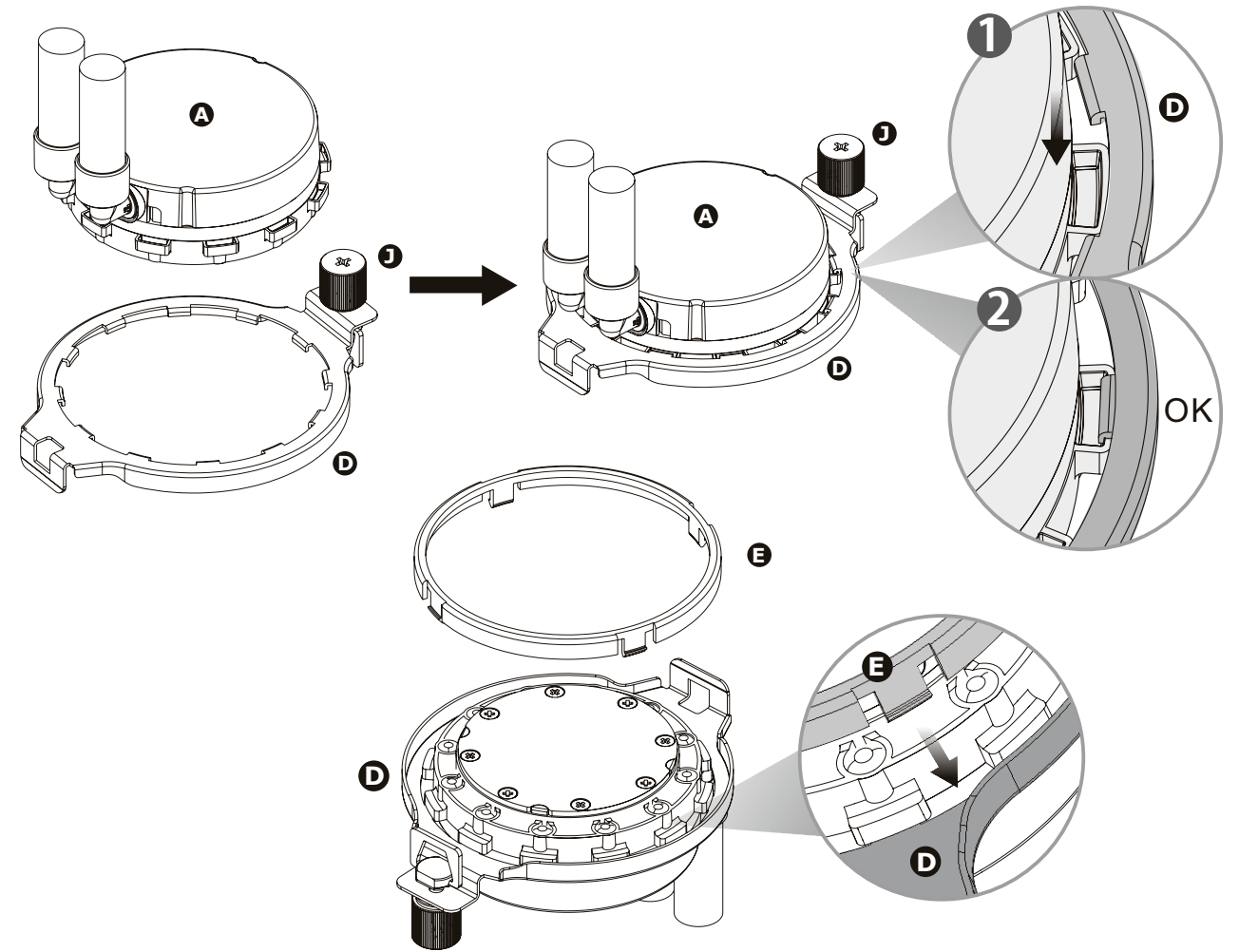
Parts List



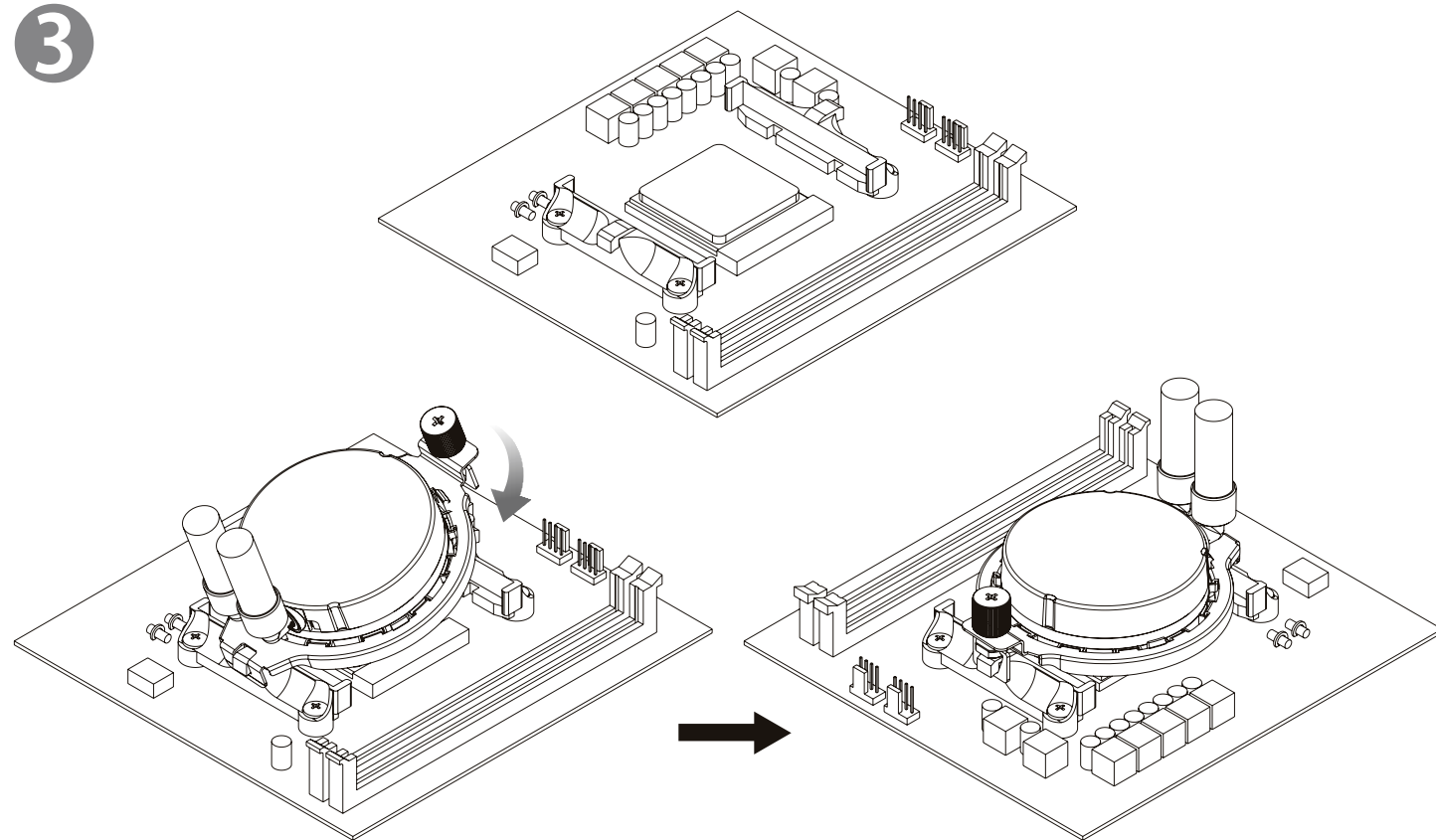
1



2

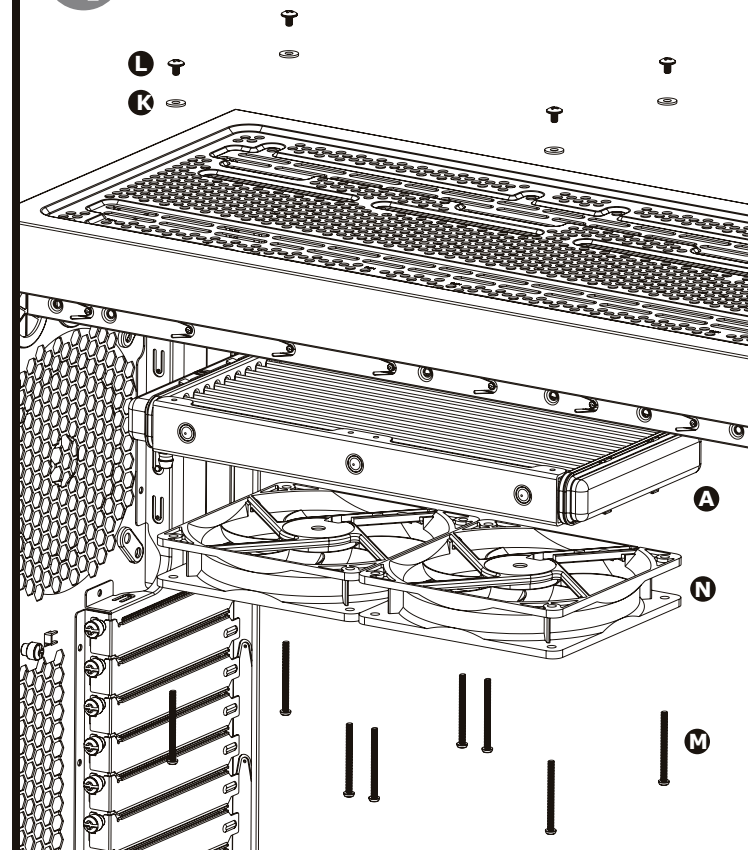


3



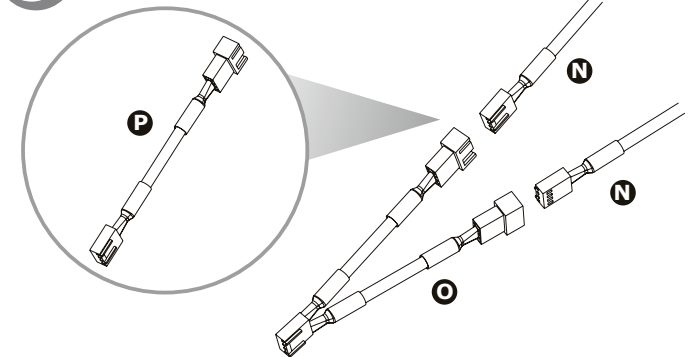
4

Compatibility may vary based on chassis design.



5

You can lower the PWM by installing the P between P and N fan cable.



6

