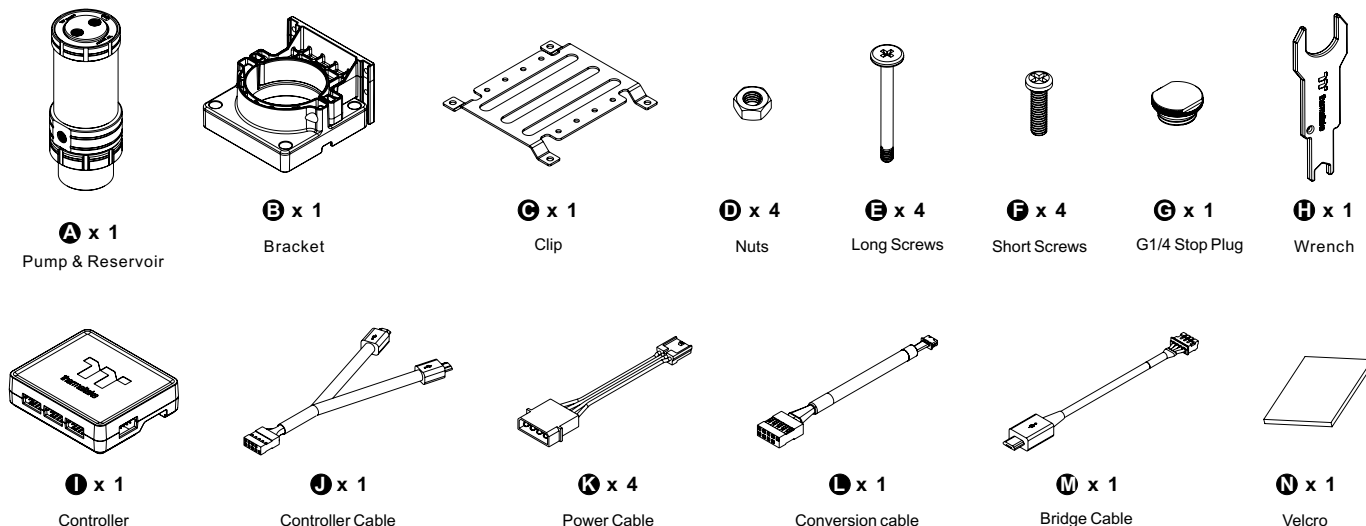


This product is intended for installation only by expert users. Please consult with a qualified technician for installation.

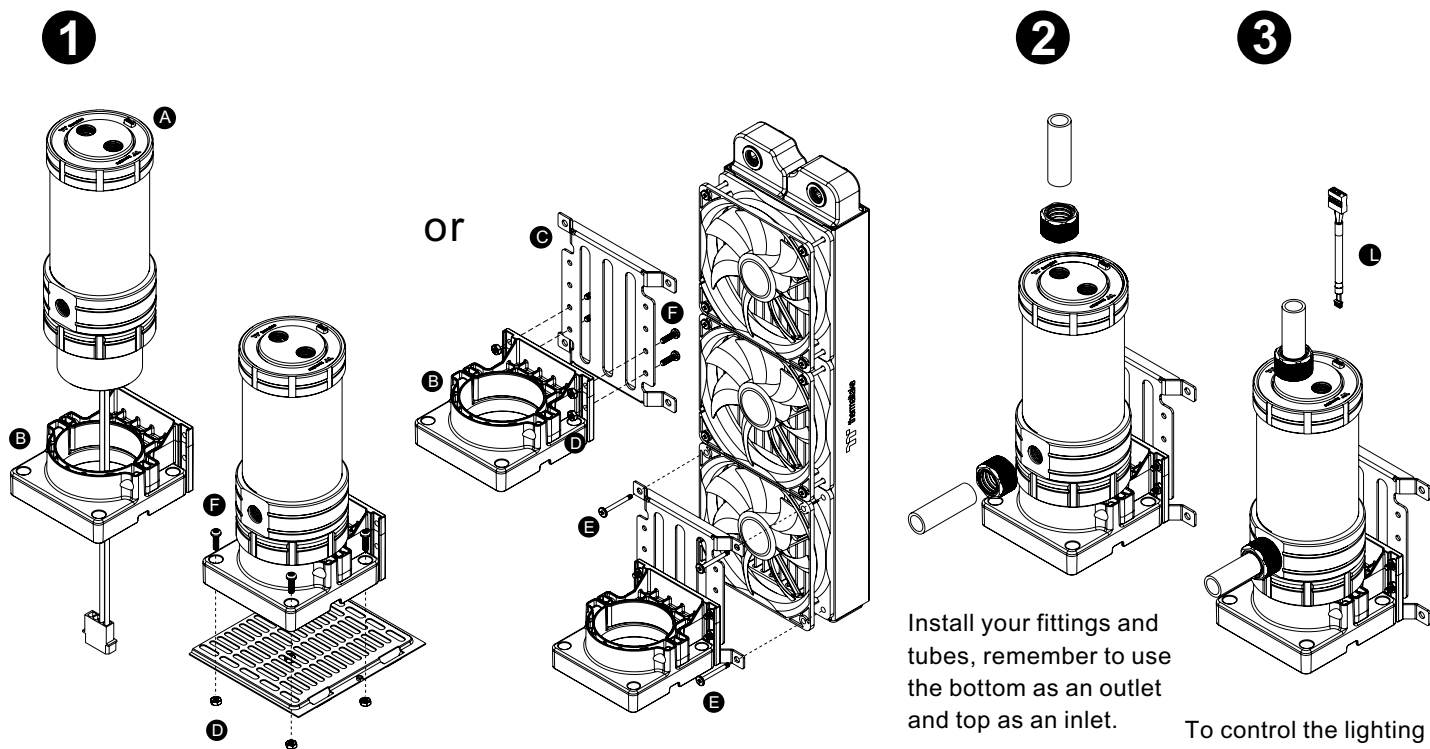
Improper installation may result in damage to your equipment.

1. Please carefully read the manual before beginning the installation process !
2. It is strongly recommended to use market proven pre-mix coolant, such as Thermaltake Coolant.
3. DO NOT USE any kind of alcohol or alcohol derivatives with this reservoir or the acrylic tube may crack and fail ! Do not clean it using alcohol either !

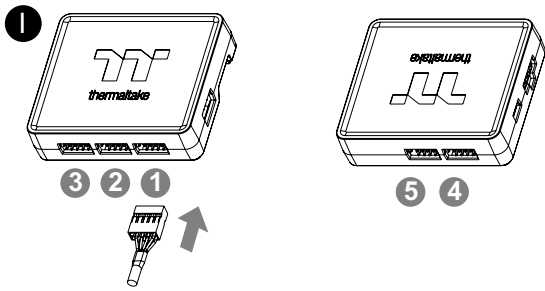
## Parts List



## Installation Guide

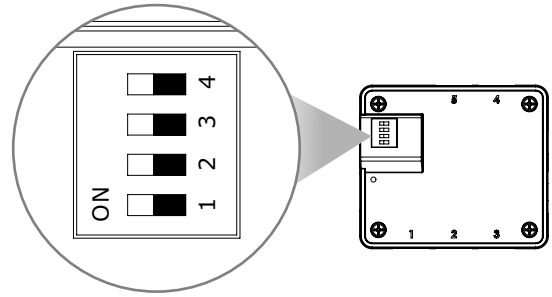


4



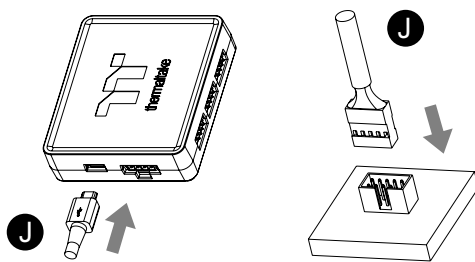
Connect the reservoir cable onto the controller.

5



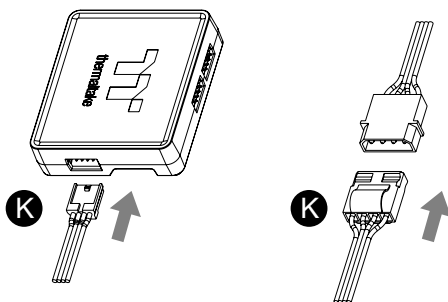
Set the DIP switch on the back side of the controller to assign the number of the controller

6



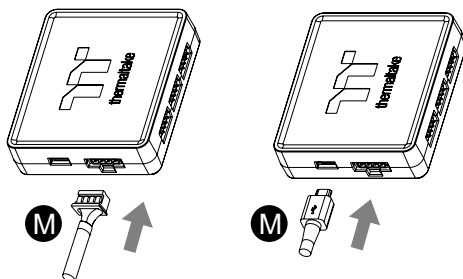
Connect the controller cable onto the mainboard (USB 2.0 9 pin) and controller.

7



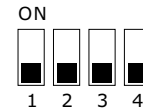
Connect the power cable to the 4pin Molex connector and controller.

8

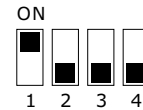


If you want to connect two or more connectors, you can use the bridge cable to connect the controllers.

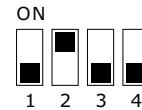
NO.1



NO.2



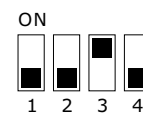
NO.3



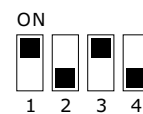
NO.4



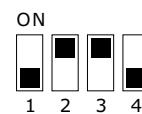
NO.5



NO.6



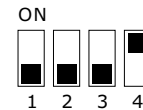
NO.7



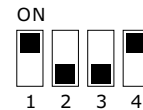
NO.8



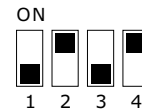
NO.9



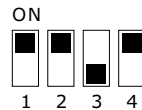
NO.10



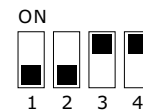
NO.11



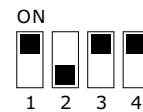
NO.12



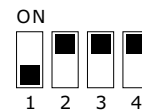
NO.13



NO.14



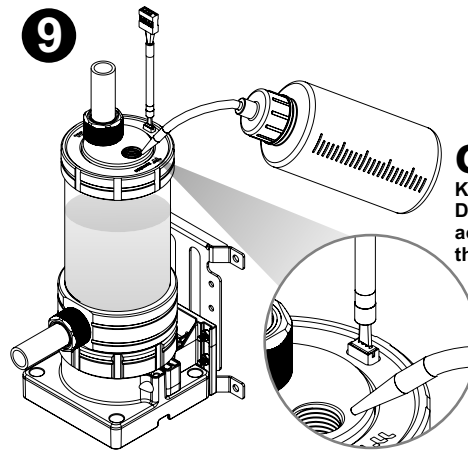
NO.15



NO.16



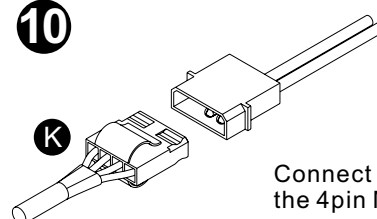
9



**Caution!**  
Keep the reservoir cap dry!  
Do not allow coolant to access the wire and the LED module

After adding the recommended coolant, remember to fill the reservoir to only 80% and leave the fill port cap off. This will help stabilize your internal loop pressure

10



Connect the Pump power cable to the 4pin Molex connector.