

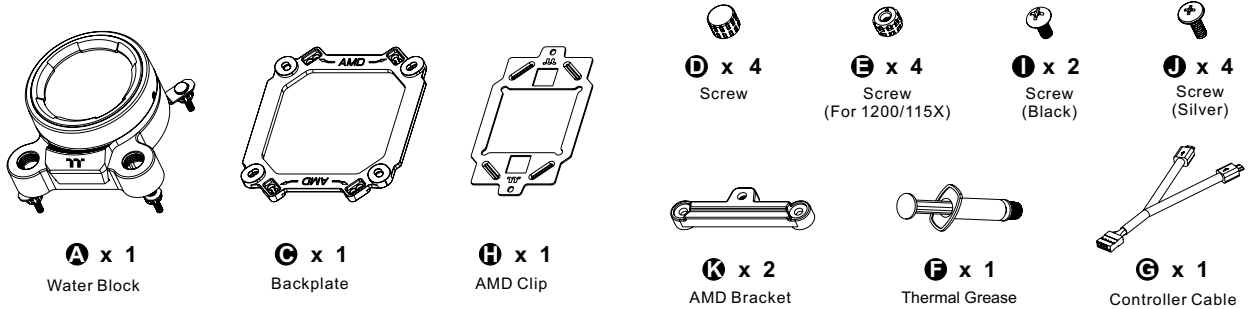


This product is intended for installation only by expert users. Please consult with a qualified technician for installation. Improper installation may result in damage to your equipment.

Before you start using this product please follow these basic guidelines:

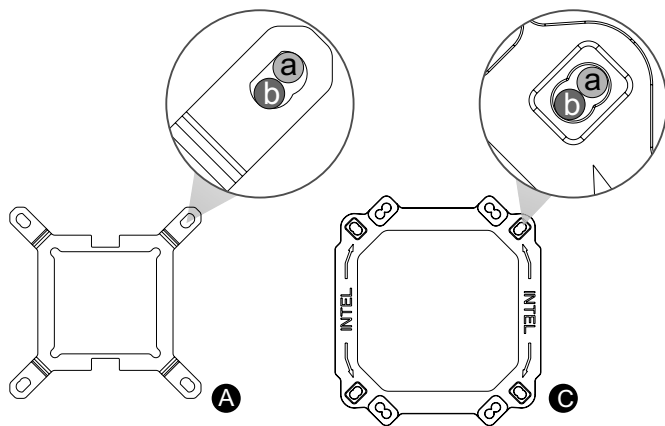
1. Please carefully read through the instruction manual before beginning the installation process.
2. Please remove your graphics card from your motherboard to insure the safest process and in order to prevent any possible damages to your CPU and motherboard.
3. It is strongly recommended to use market proven pre-mix coolant, such as Thermaltake Coolant Series.

## Parts List

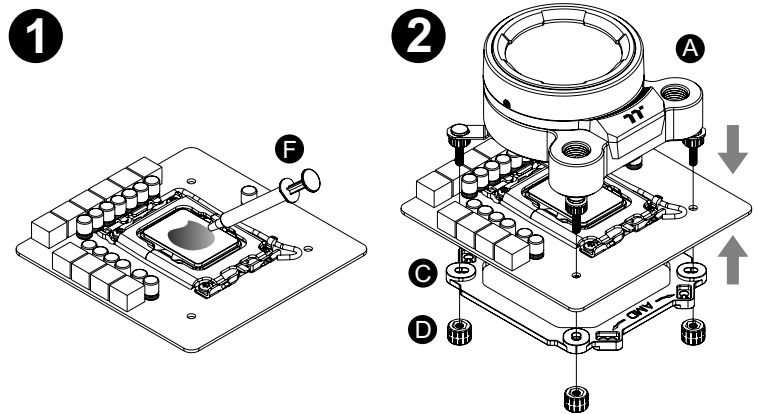


### Intel

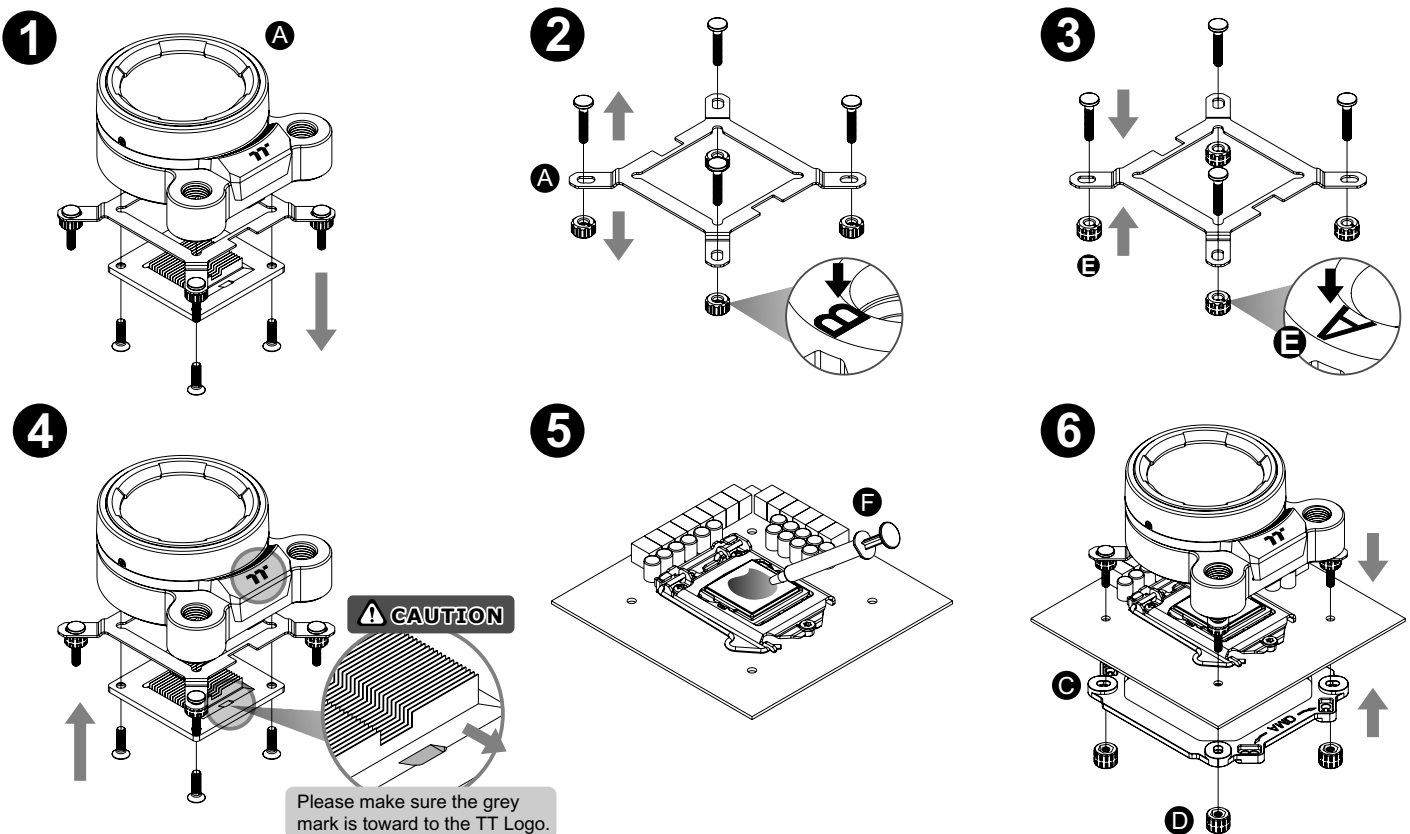
- a LGA1700
- b LGA1200/1156/1155/1151/1150



### Intel LGA 1700



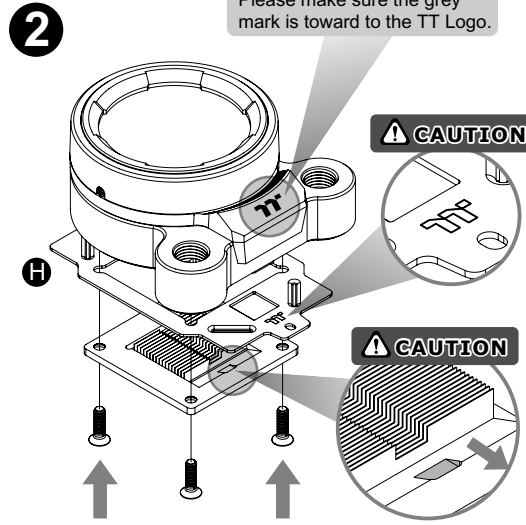
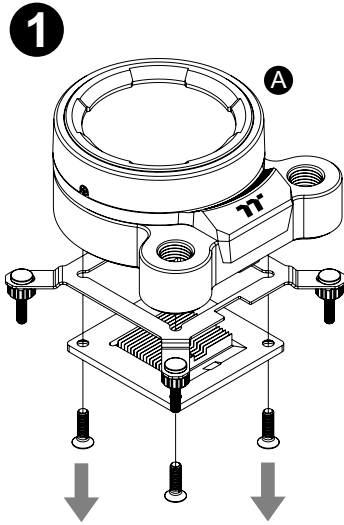
### Intel LGA 1200/115X



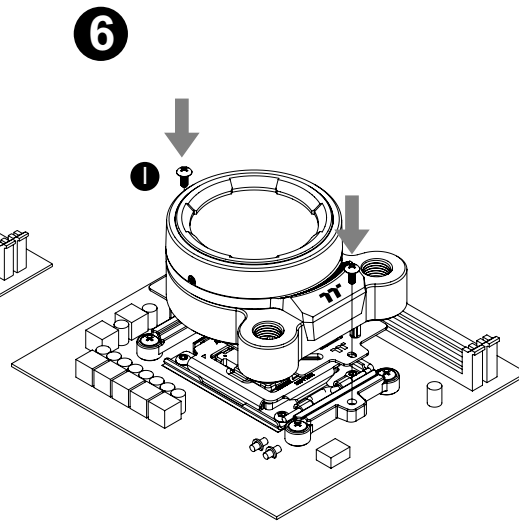
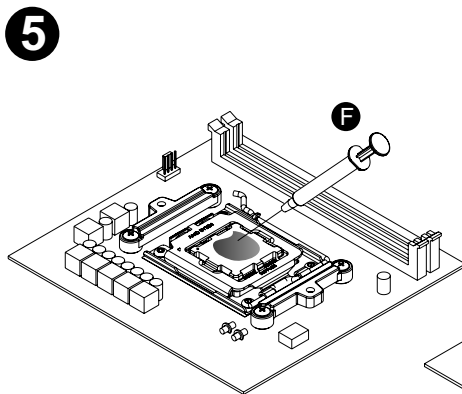
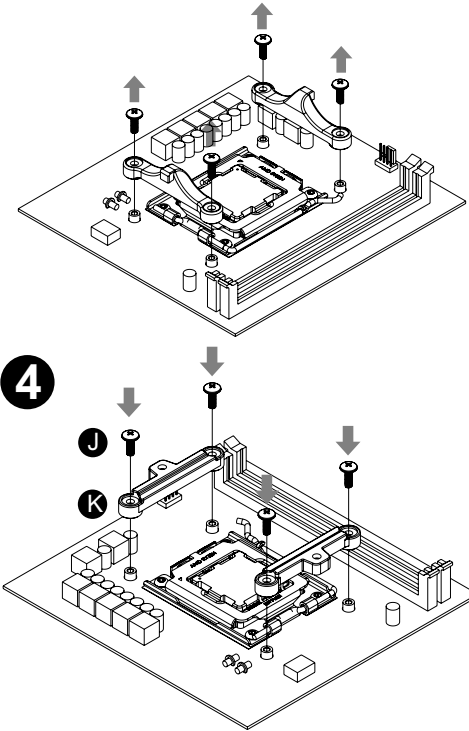


AMD

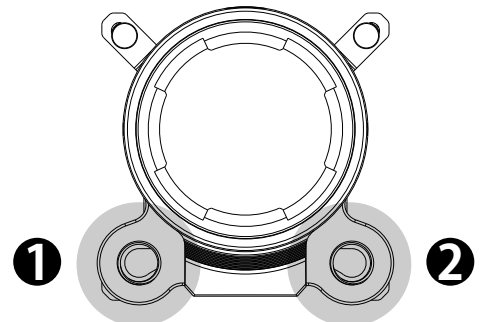
AM4/AM5



3 Please remove the stock AMD mounting bracket, use AMD backplate

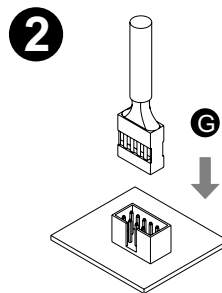
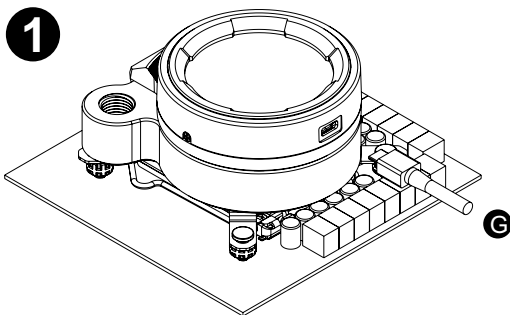


## Installation Guide



- 1 Out : Circle 1 is designed for liquid outlet  
2 In : Circle 2 is designed for liquid inlet/fill

## MB SYNC Installation Guide



### **CAUTION**

To control the LCD display by TT RGB PLUS Software, Please connect the water block and motherboard with cable G.

This device complies with Part 15 of the FCC Rules. Operation is subject to the following two conditions: (1) this device may not cause harmful interference, and (2) this device must accept any interference received, including interference that may cause undesired operation.



## TT RGB Plus Software control interface

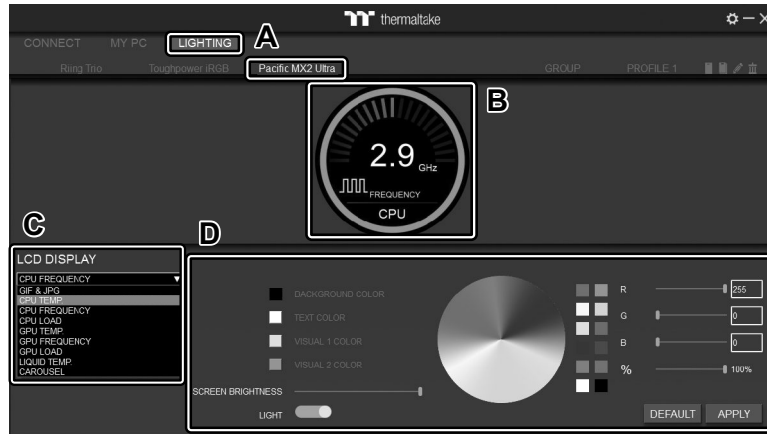
Please download TT RGB PLUS from Thermalright's Official website.

<https://www.thermalright.com/downloads>

OS compatibility: Windows 10 & Windows 11

### Pacific MX2 Ultra CPU Water Block Software User Interface

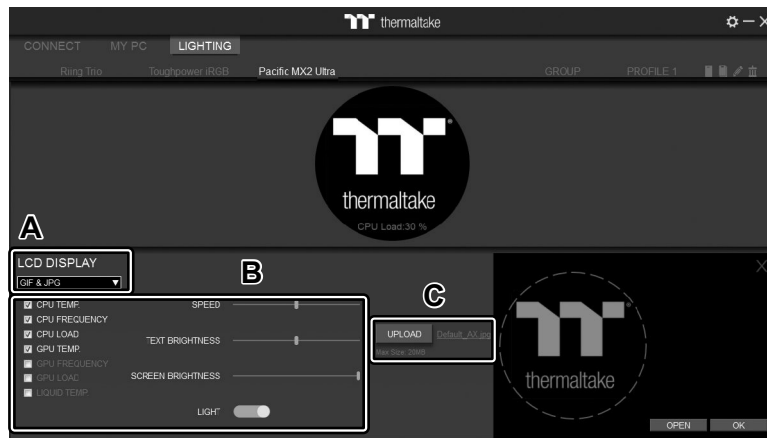
#### LIGHTING



- After installation of TT RGB PLUS, you can select "TOUGHLIQUID ULTRA" on the "Pacific MX2 Ultra" page.
- Preset the CPU water block LCD.
- LCD DISPLAY function list.
  - GIF & JPG (Upload picture to LCD display)
  - CPU TEMP.
  - CPU CLOCK SPEED
  - CPU LOAD
  - GPU TEMP.
  - GPU CLOCK SPEED
  - GPU LOAD
  - LIQUID TEMP.
  - CAROUSEL (Switches between CPU/GPU/Liquid information)
- LCD visual effect settings.
 

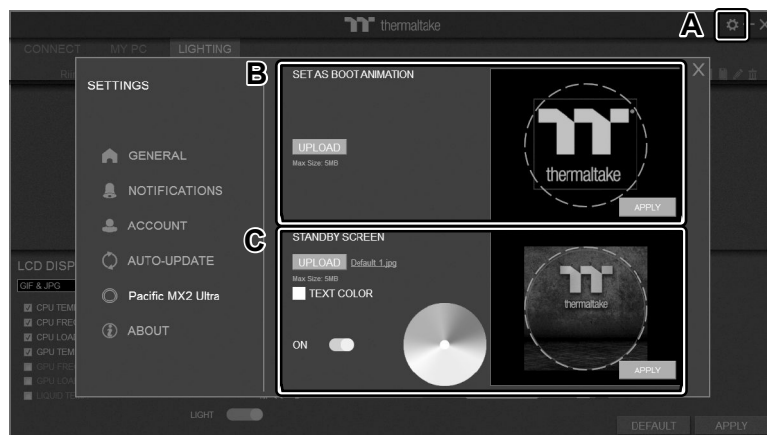
Set LCD display background, text and visual color, screen brightness or turn off LCD screen.

#### GIF & JPG



- Select "GIF & JPG" from "LCD DISPLAY". You can upload a GIF or JPG file to show the picture on the LCD screen. (Max size: 20MB)
- Set the LCD display text information, speed and brightness, or turn off LCD screen.
- Click "UPLOAD" to upload the picture. (GIF and JPG files only)

#### SETTINGS



- Click the gear icon on the upper right corner to enter the "SETTINGS" menu.
- Upload the picture to set as LCD boot animation. (GIF only, Max size: 5MB)
- Upload the picture to set as LCD standby screen. (JPG only, Max size: 5MB)



software interface may vary with feature update, please download the latest user manual from our [www.thermalright.com](http://www.thermalright.com)