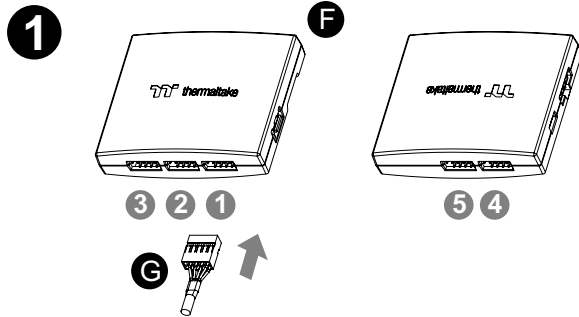
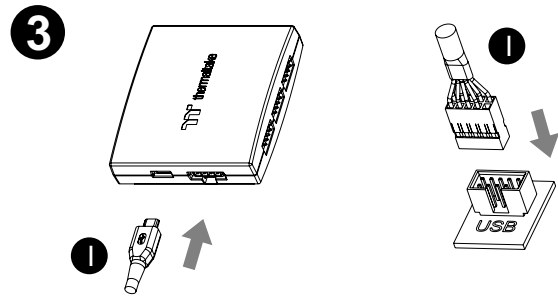




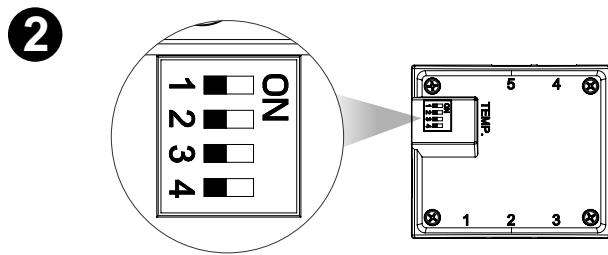
## Controller Installation Guide



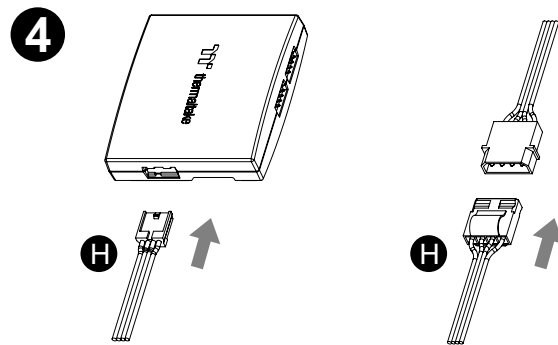
Connect the reservoir cable onto the controller.



Connect the controller cable onto the mainboard (USB 2.0 9 pin) and controller.

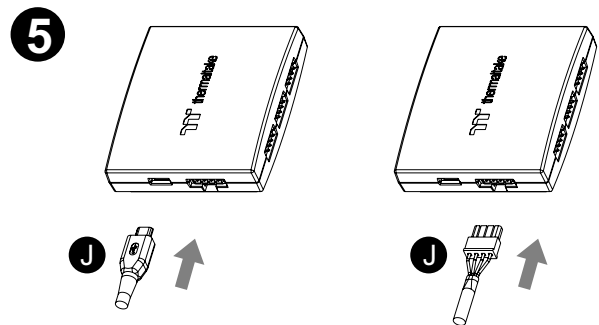


Set the DIP switch on the back side of the controller to assign the number of the controller



Connect the power cable to the 4pin Molex connector and controller.

<p><b>NO.1</b></p> <p>ON</p> <p>1 2 3 4</p>	<p><b>NO.2</b></p> <p>ON</p> <p>1 2 3 4</p>	<p><b>NO.3</b></p> <p>ON</p> <p>1 2 3 4</p>	<p><b>NO.4</b></p> <p>ON</p> <p>1 2 3 4</p>
<p><b>NO.5</b></p> <p>ON</p> <p>1 2 3 4</p>	<p><b>NO.6</b></p> <p>ON</p> <p>1 2 3 4</p>	<p><b>NO.7</b></p> <p>ON</p> <p>1 2 3 4</p>	<p><b>NO.8</b></p> <p>ON</p> <p>1 2 3 4</p>
<p><b>NO.9</b></p> <p>ON</p> <p>1 2 3 4</p>	<p><b>NO.10</b></p> <p>ON</p> <p>1 2 3 4</p>	<p><b>NO.11</b></p> <p>ON</p> <p>1 2 3 4</p>	<p><b>NO.12</b></p> <p>ON</p> <p>1 2 3 4</p>
<p><b>NO.13</b></p> <p>ON</p> <p>1 2 3 4</p>	<p><b>NO.14</b></p> <p>ON</p> <p>1 2 3 4</p>	<p><b>NO.15</b></p> <p>ON</p> <p>1 2 3 4</p>	<p><b>NO.16</b></p> <p>ON</p> <p>1 2 3 4</p>



If you want to connect two or more connectors, you can use the bridge cable to connect the controllers.

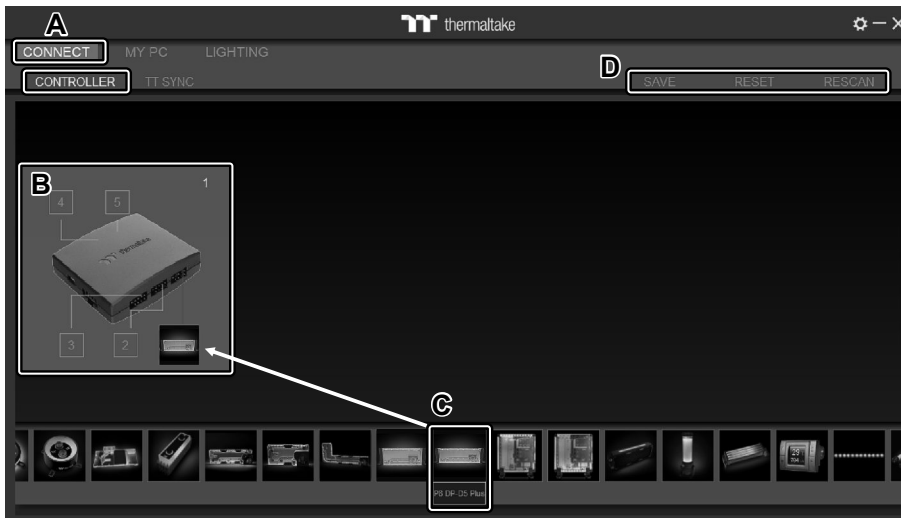
# TT RGB Plus Software control interface

Please download TT RGB PLUS from Thermaltake's Official website.

<https://www.thermaltake.com/downloads> [ OS compatibility: Windows 10, Windows 11 ]

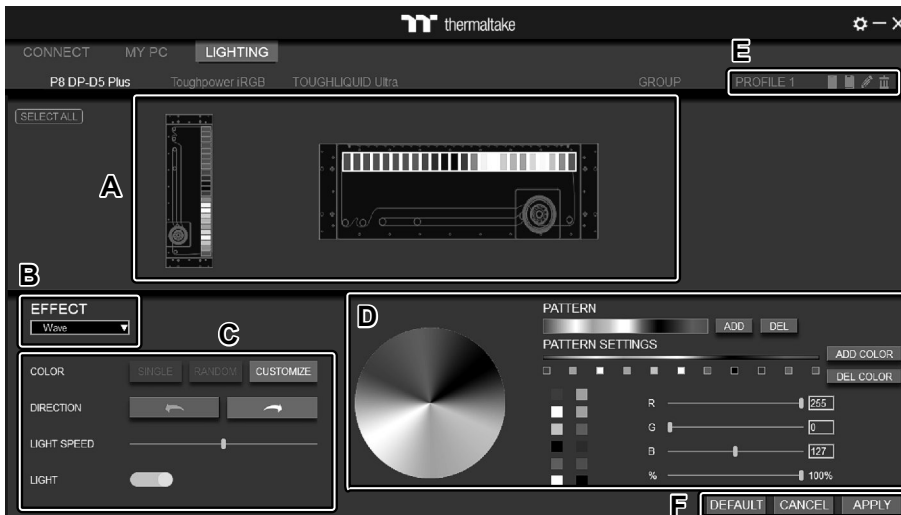
## Pacific Core P8 DP-D5 Plus Software User Interface

### CONNECT - CONTROLLER



- A. After installation of TT RGB PLUS, you can find controllers on the "CONNECT" & "CONTROLLER" pages.
- B. Click the controller port to make the "P8 DP-D5 Plus" fan glow red lighting to pair.
- C. Drag and drop to pair the "P8 DP-D5 Plus" fan with the controller port.
- D. SAVE: Save the controller pairing settings.  
RESET: Reset the controller pairing.  
RESCAN: Rescan the controllers.

### LIGHTING



- A. Preview and edit the lighting effect.
- B. Select 23 Lighting Effects.
- C. Lighting effect setting: Color, Direction, Light Speed, Light.
- D. Lighting color settings.
- E. Profile Settings: New, Copy, Edit, Delete
- F. DEFAULT: Reset the lighting effects.  
CANCEL: Deselect the LEDs for the preview screen.  
APPLY: Execute and store lighting effects.



The software interface may vary with feature updates, please download the latest software version from [www.thermaltake.com](http://www.thermaltake.com)