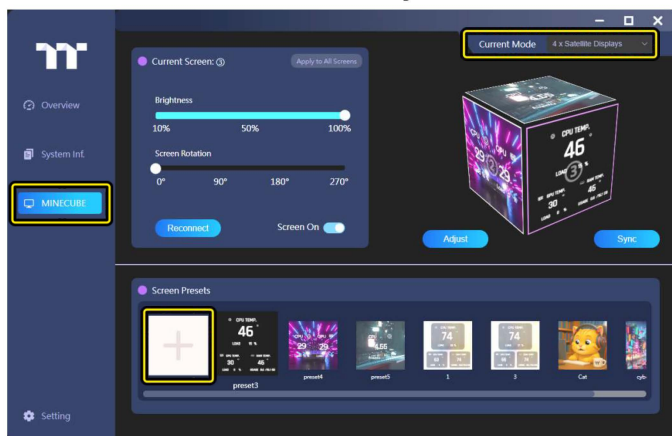


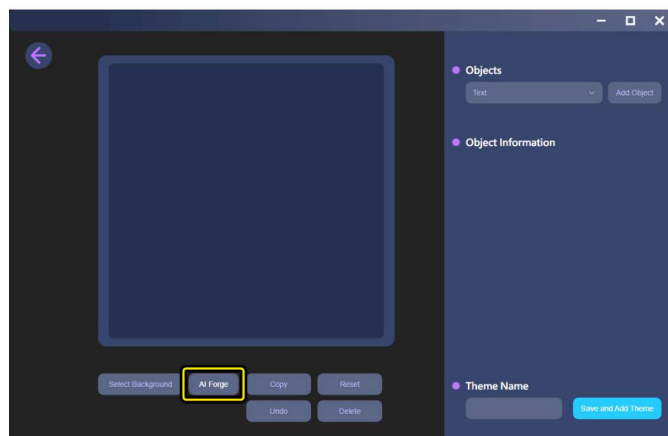


Download the latest version of TT LCD Screen software from the Thermaltake website.
<https://www.thermaltake.com/downloads> OS compatibility: Windows 10 & Windows 11

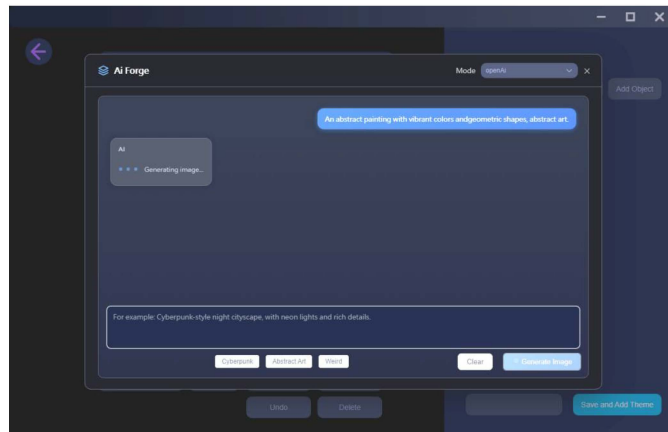
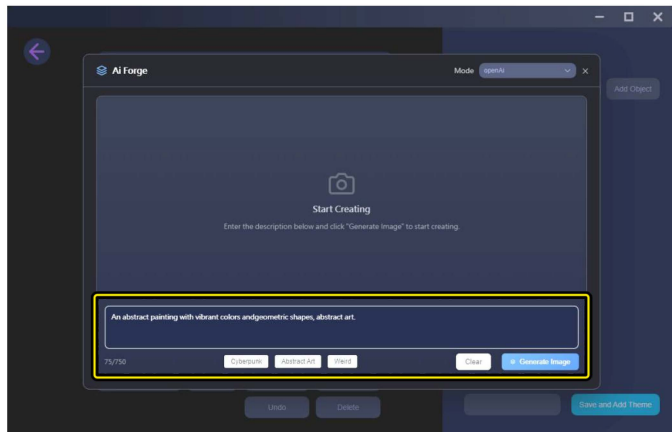
Select the LCD Product and 4 x Satellite Displays mode.
Click "+" to enter the LCD theme settings menu.



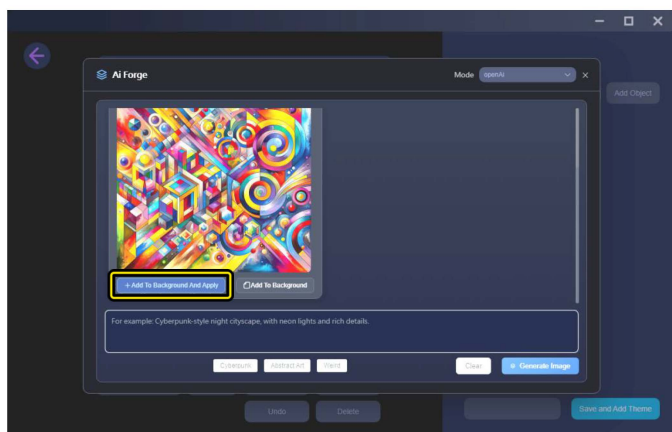
Select and click the **AI Forge** button.



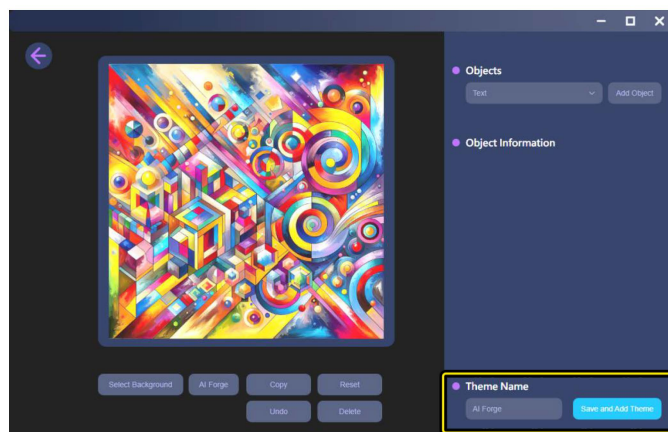
Enter the prompt and click **Generate Image** to generate the image.



Click the button to confirm adding the image to the background gallery.

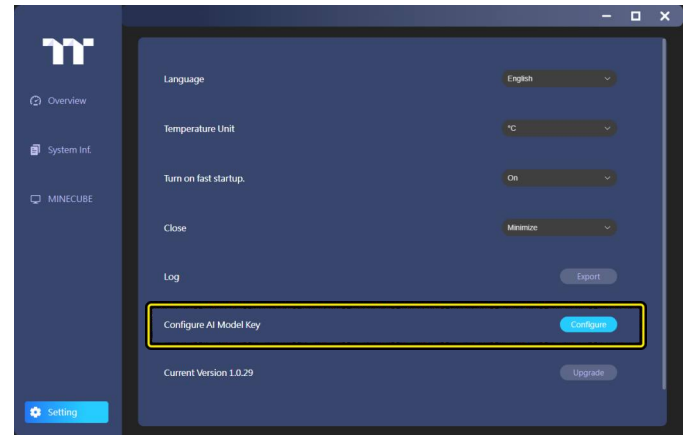
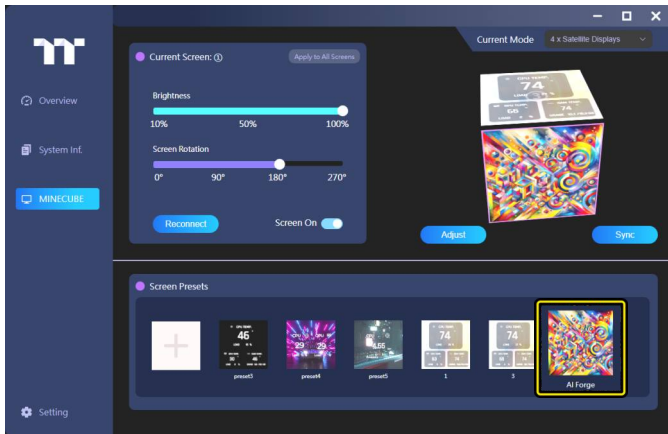


Input the **Theme Name** and click the **Save and Add Theme**.

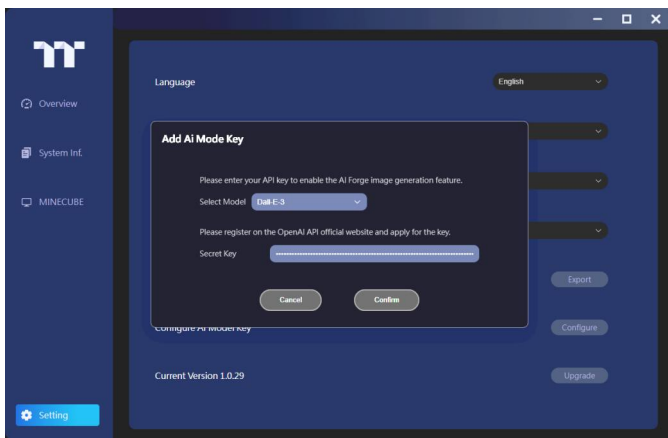


TT LCD Screen User Manual - AI Forge

First-time use of this function. Please navigate to the **Setting** page and enter the OpenAI API key.



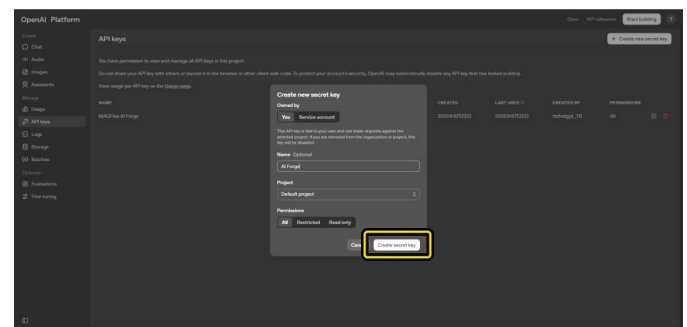
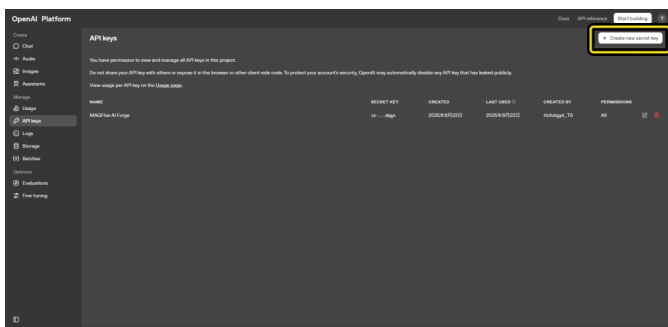
Select the AI model to input the API Key.



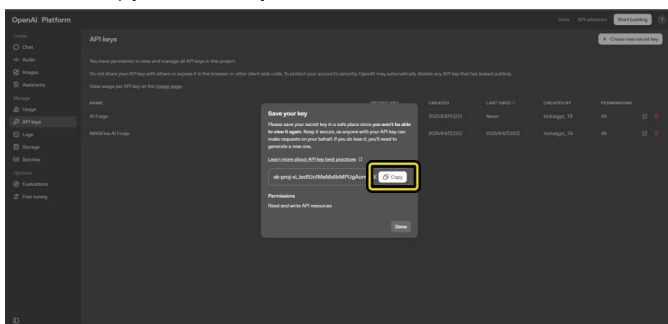
API Key

Obtain the OpenAI API Key. <https://platform.openai.com/api-keys>
Click **Create new secret key** button to create a key.

Create a new secret key.



Click to copy the API key.



The AI image generation function in AI Forge requires linking a credit card for payment before use.
Click **Add payment details** to bind a credit card.
<https://platform.openai.com/settings/organization/billing/overview>

