

This product is intended for installation only by expert users. Please consult with a qualified technician for installation.

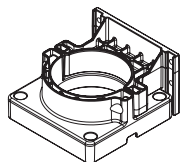
Improper installation may result in damage to your equipment.

1. Please carefully read the manual before beginning the installation process !
2. It is strongly recommended to use market proven pre-mix coolant, such as Thermaltake Coolant.
3. DO NOT USE any kind of alcohol or alcohol derivatives with this reservoir or the acrylic tube may crack and fail ! Do not clean it using alcohol either !

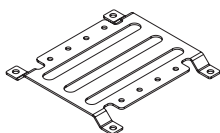
Parts List



A x 1
Pump & Reservoir



B x 1
Bracket



C x 1
Clip



D x 4
Nuts



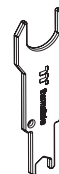
E x 4
Long Screws



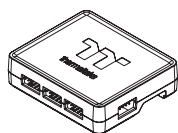
F x 4
Short Screws



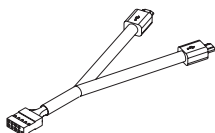
G x 1
G1/4 Stop Plug



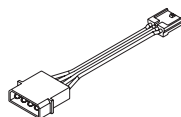
H x 1
Wrench



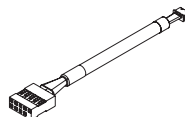
I x 1
Controller



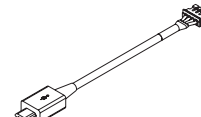
J x 1
Controller Cable



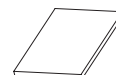
K x 4
Power Cable



L x 1
Conversion cable



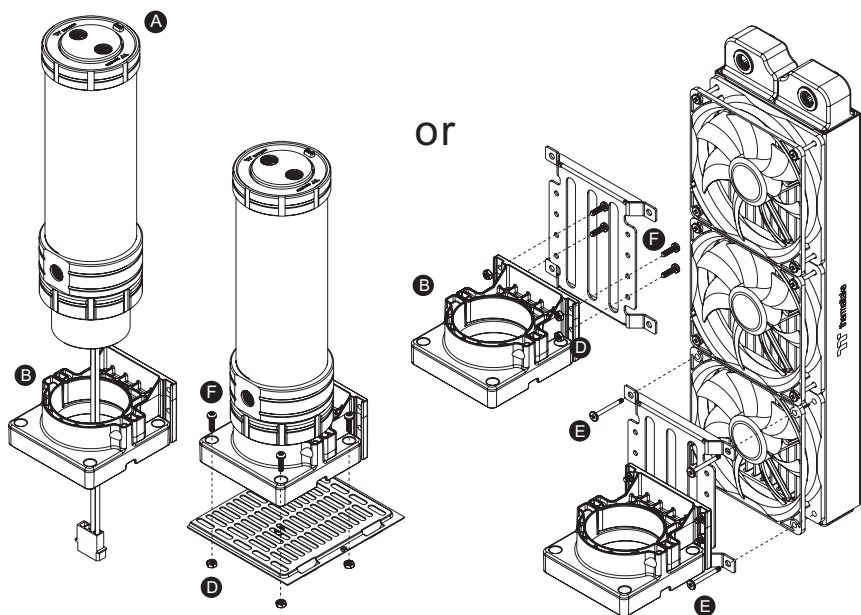
M x 1
Bridge Cable



N x 1
Velcro

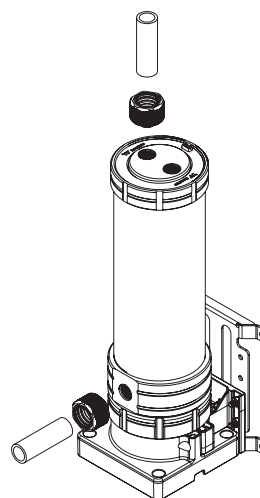
Installation Guide

1



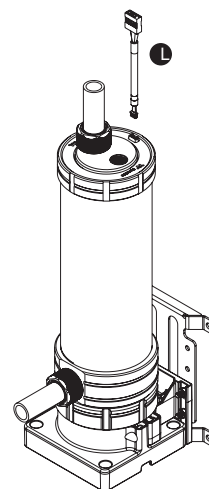
There are two types of mounting kits, please choose the mounting kit you want to use.

2



Install your fittings and tubes, remember to use the bottom as an outlet and top as an inlet.

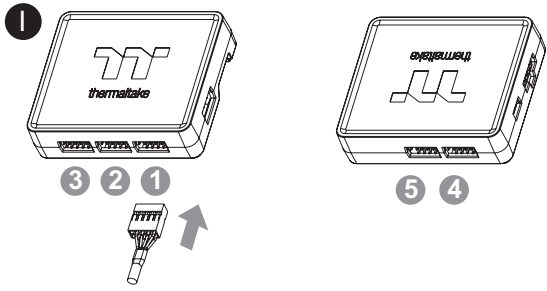
3



Connect the reservoir cable to the conversion cable.

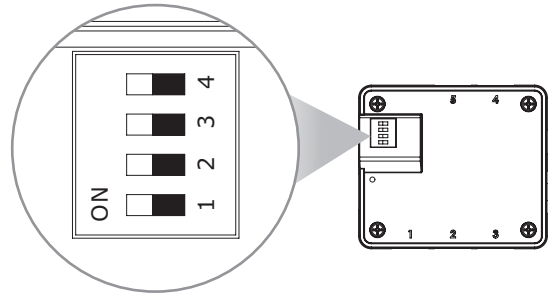
Installation Guide

4



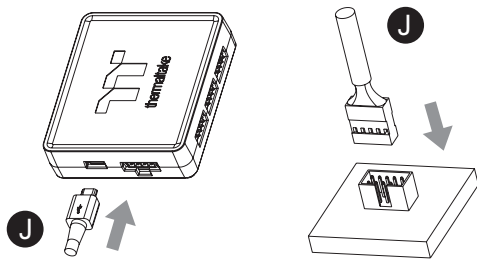
Connect the reservoir cable onto the controller.

5



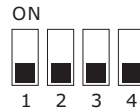
Set the DIP switch on the back side of the controller to assign the number of the controller

6

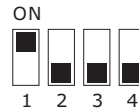


Connect the controller cable onto the mainboard (USB 2.0 9 pin) and controller.

NO.1



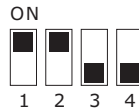
NO.2



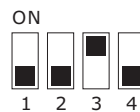
NO.3



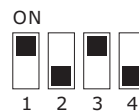
NO.4



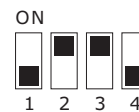
NO.5



NO.6



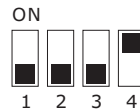
NO.7



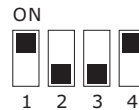
NO.8



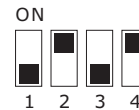
NO.9



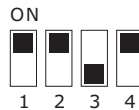
NO.10



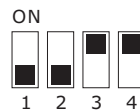
NO.11



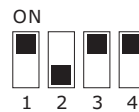
NO.12



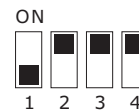
NO.13



NO.14



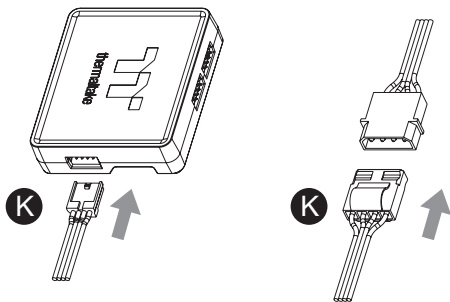
NO.15



NO.16

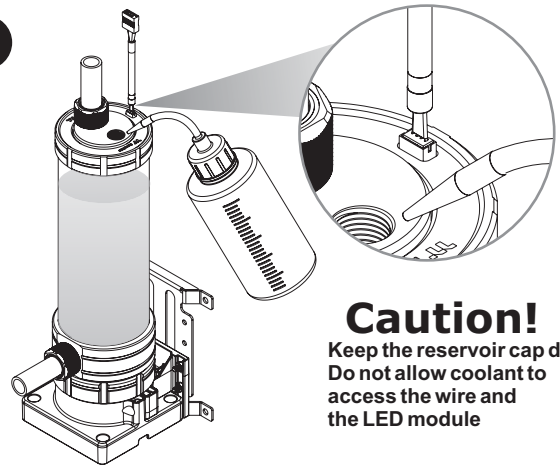


7



Connect the power cable to the 4pin Molex connector and controller.

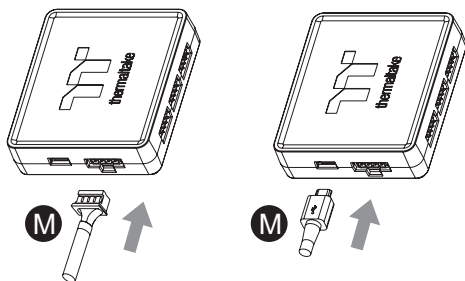
9



Caution!
Keep the reservoir cap dry!
Do not allow coolant to access the wire and the LED module

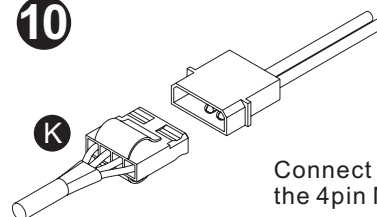
After adding the recommended coolant, remember to fill the reservoir to only 80% and leave the fill port cap off. This will help stabilize your internal loop pressure

8



If you want to connect two or more connectors, you can use the bridge cable to connect the controllers.

10



Connect the Pump power cable to the 4pin Molex connector.