

LEVEL 20

EXTENDED MOUSE PAD

Software User Guide



PAGE 03 TT iTAKE Installation

PAGE 06 Functions Available on the Home Page

PAGE 08 Functions Available on the Lighting Effects Page

PAGE 10 Lighting Effects Overview

- Static
- Pulse
- Blink
- RGB Spectrum
- Raindrop
- Music Mode
- Temp.

PAGE 21 Functions Available on the Settings Page

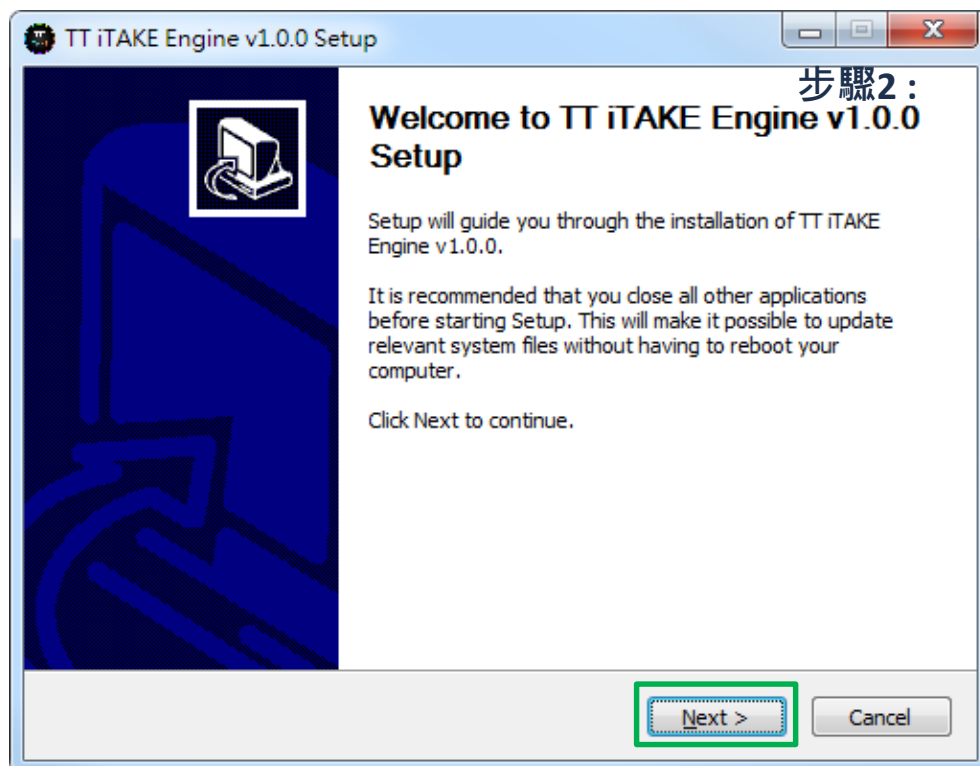


| Chapter 1 : **TT iTAKE Installation**



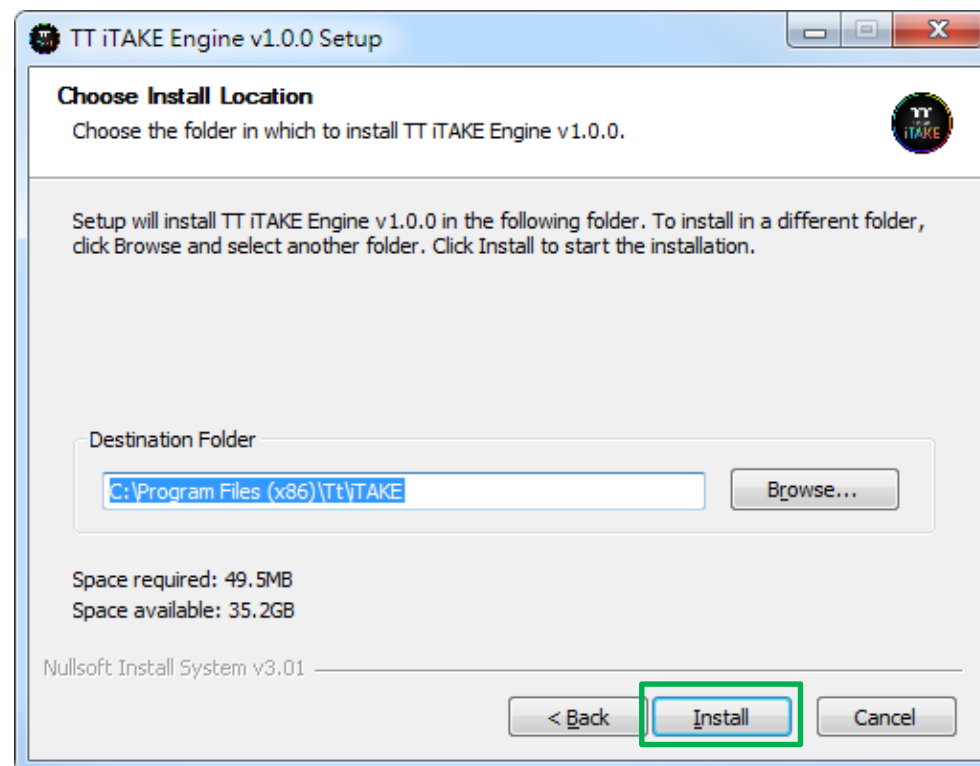
Step 1:

Launch the setup executable file (.EXE) file and click Next.



Step 2:

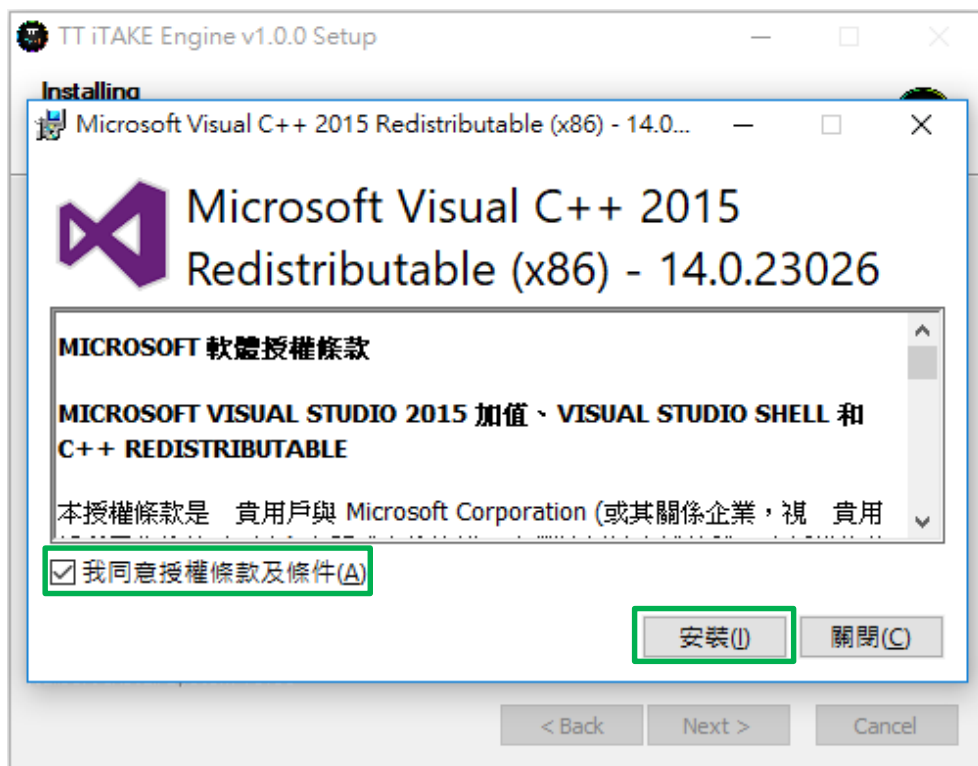
Click Install to begin the setup process.



Step 3:

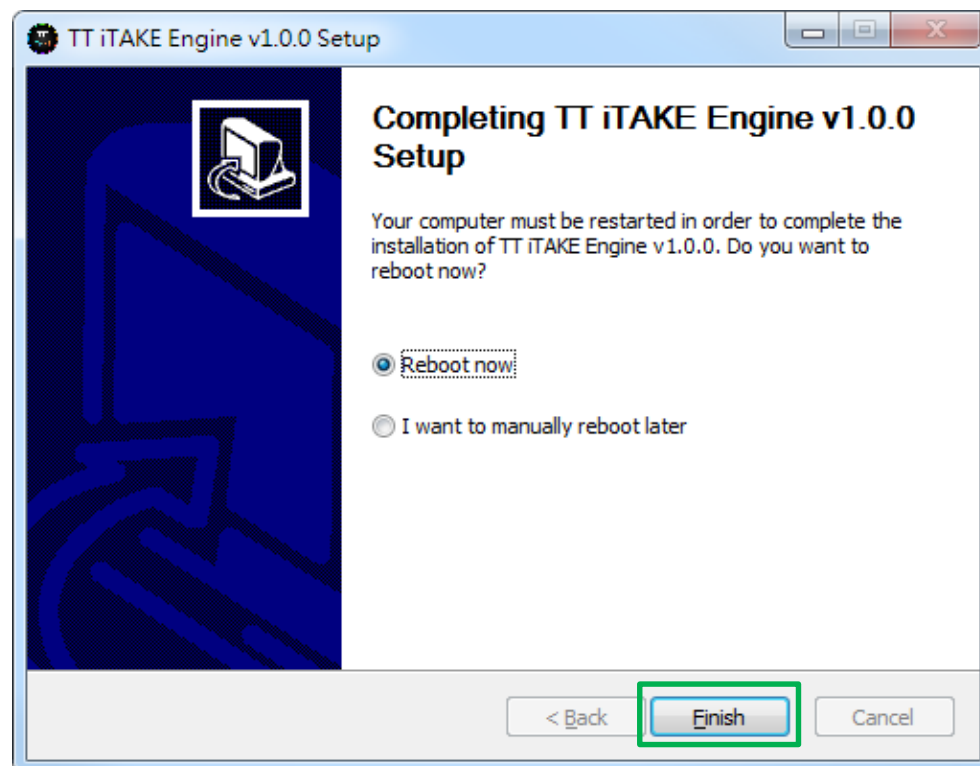
Once setup is complete, you will also need to install Microsoft Visual C++ 2015 Redistributable Package.

✗ Without installing the Redistributable Package, the software will fail to launch.



Step 4:

Click Finish to complete the installation.



| Chapter 2 : **Functions Available on the Home Page**



Switching Home Pages

You can switch the main keyboard configurations page with the macro recording page.

Switching Profiles

The software can support up to 6 profiles, which can be switched as required.

Functions for Managing Profiles

Up to 15 profiles can be added for use. The functions of each button from left to right are:

Add: Create a new profile.

Delete: Delete an existing profile.

Copy: Copy a profile.

Import: Import a profile.

Export: Export a profile.

Changing profile names

The name of a new profile can be modified directly.

Lighting Effects Overview

Other Settings / Shrink Window / Close Window

Other Settings: Software version, firmware version, Amazon Alexa setting and switching language used for the user interface.

Shrink Window: Close the display and minimize the program to the taskbar.

Close Window: Close the display and minimize the program to the lower right corner.



| Chapter 3 : Functions Available on the Lighting Effects Page



Switching Lighting Effects

8 lighting effects are supported for the Mouse Pad:
Default 、 Static 、 Pulse 、 Spectrum Cycling 、
Raindrops 、 Sound Control and System Temperature 。

Lighting Effect Configurations

Can be used to adjust the color, direction, speed, and
brightness level of the lighting effect within an area;
can also be used to switch to random colors.

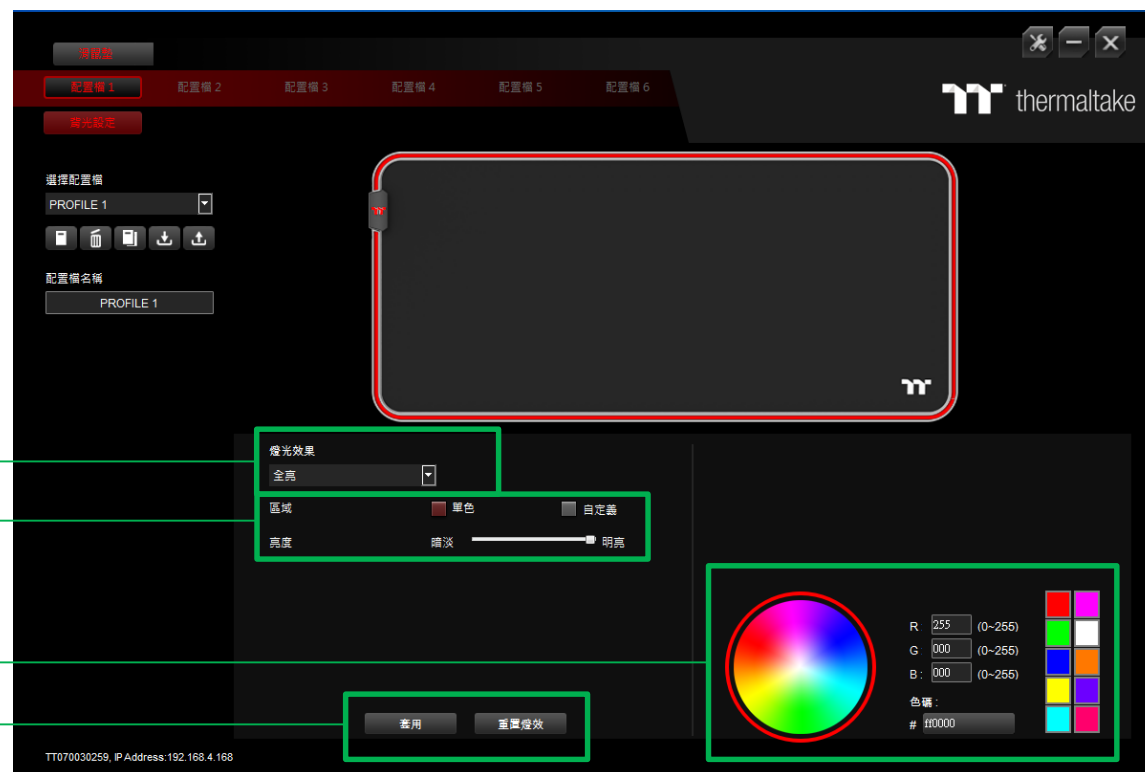
Color Pattern Settings

Add Pattern: Add a new pattern with red to black gradient.
Delete Pattern: Delete the currently selected color pattern.
Insert Color Point: Add a red color point to the color pattern.
Delete Color Point: Delete the selected color point from the
color pattern.

Apply / Restore Lighting Effect Settings

Apply: Apply the a new lighting effect setting to all keys on
the keyboard.

Restore Lighting Effect Settings: All lighting effect settings
saved under the current profile will be restored to factory
default values.



| Chapter 4 : **Lighting Effects Overview**



Lighting Effect-Static-Single

1. Click the Color.
2. Click "Apply" to complete.





Lighting Effect-Static-Customize

1. Click the Color.
2. Click the Area A, Area B and Area C.
3. Click "Apply" to complete.





Lighting Effect-Pulse-Single

1. Click the Color.
2. Click "Apply" to complete.

Lighting Effect-Pulse-Random

1. Click "Random"
2. Click "Apply" to complete.





Lighting Effect-Pulse-Customize

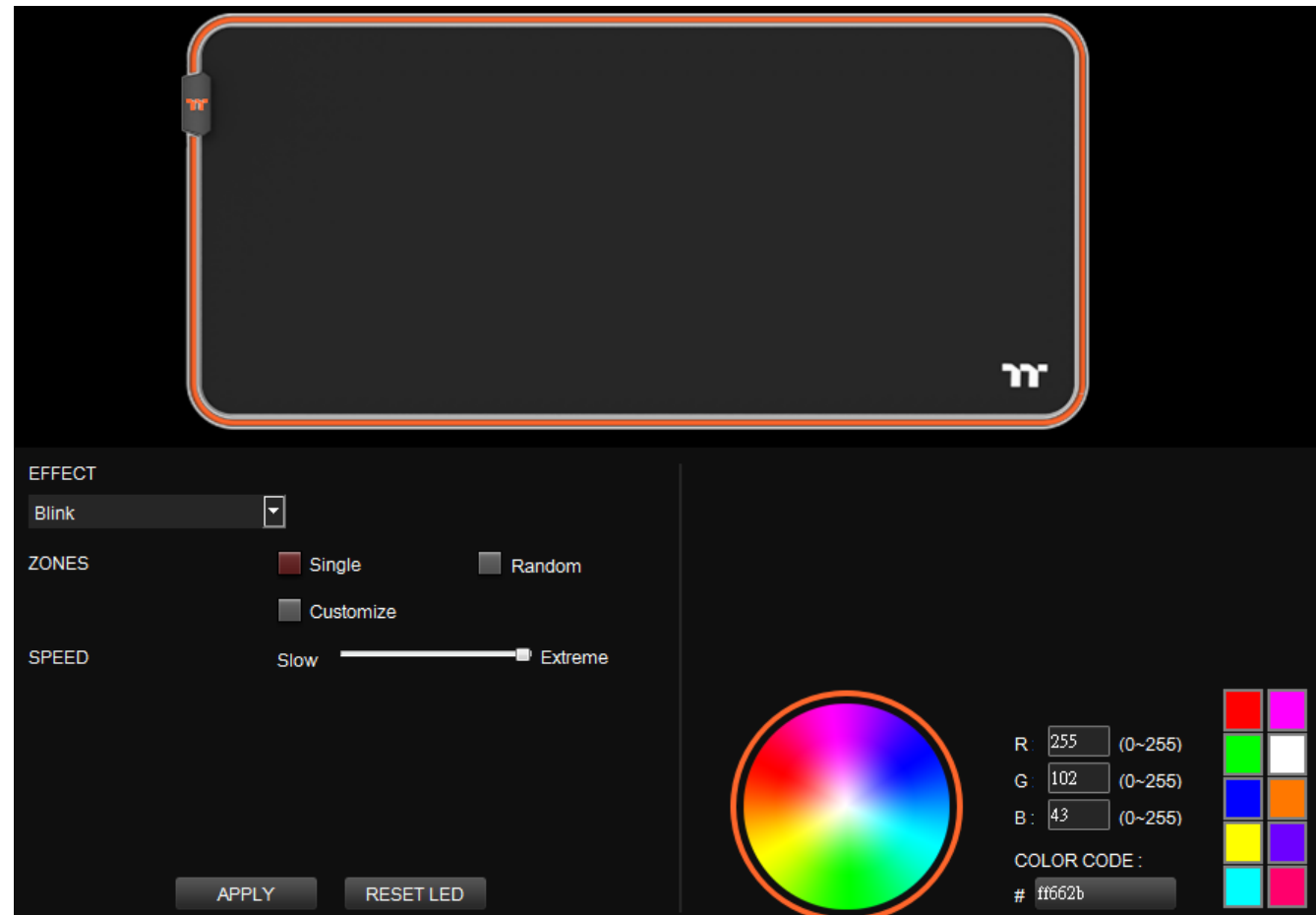
1. Click the Color.
2. Click the Area A, Area B and Area C.
3. Click "Apply" to complete.





Lighting Effect-Blink-Single
1. Click the Color.
2. Click "Apply" to complete.

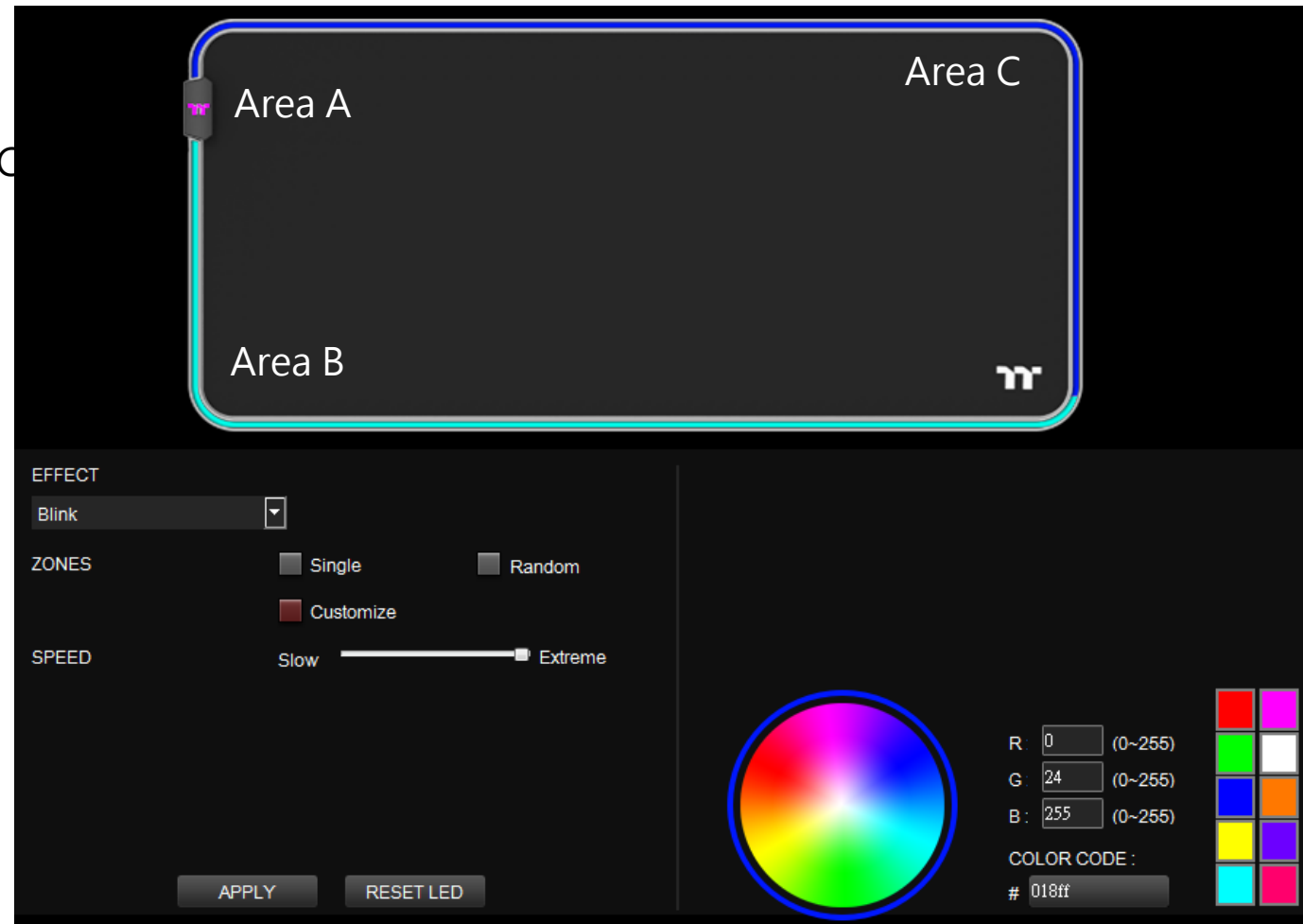
Lighting Effect-Blink-Random
1. Click "Random"
2. Click "Apply" to complete.





Lighting Effect-Blink-Customize

1. Click the Color.
2. Click Area A, Area B and Area C
3. Click "Apply" to complete.





Lighting Effect-RGB Spectrum

1. Click "RGB Spectrum"
2. Click "Apply" to complete.





Lighting Effect-Raindrop-Single

1. Click the Color.
2. Click "Apply" to complete.

Lighting Effect-Raindrop-Random

1. Click the "Random"
2. Click "Apply" to complete.





Lighting Effect-Music Mode

1. Click "Movie" , "Gaming" or "Party" .
2. Click the "Square 1, 2, 3" then click color to setting color.
3. Click "Apply" to complete.





Lighting Effect-Temp.
1.Click "Apply" to complete.



| Chapter 5 : **Functions Available on the Settings Page**

Language Settings

Sets the language of the program's user interface.

Switch background surface

RAZER CHROMA SYNC function off/on

Amazon Alexa Login

TT iTAKE software support Amazon Alexa voice service, allowing you to control the lights by talking to the Alexa Enabled device.

TT iTAKE APP Password Setting

Enter four numbers or English alphabet.

✕ Empty is disable function.

Official Website / Social Media

Official Website: Visit the Product official website.

Social Media: Visit Thermaltake on Facebook.

